

400th Anniversary of  
the Death of Tokugawa Ieyasu

# Along the Tōkaidō: Shizuoka's Two Passes and Six Stations

**March 31 (Tue.) – May 31 (Sun.)**

Part 1: March 31 (Tue.) – April 26 (Sun.)

Part 2: April 28 (Tue.) – May 31 (Sun.)

Organizer: Shizuoka City Tokaido Hiroshige Museum of Art  
Designated Manager: NPO Hexaproject  
Cooperation: 400th Anniversary of the Death of Tokugawa Ieyasu  
The Adachi Foundation for the Preservation of Woodcut Printing

## Outline

This year marks 400 years since the death of Tokugawa Ieyasu. To commemorate this special year, we are holding an exhibition with a Tōkaidō theme, the route which Ieyasu made improvements.

Utagawa Hiroshige, who frequently depicted famous sites, drew the Tōkaidō numerous times. Featured in this exhibit are his Famous Sights of the Fifty-three Stations (The Vertical Tōkaidō) and Fifty-three Stations of the Tōkaidō (Tsutaya Edition). In conjunction with this, we are also displaying a rich variety of masterpieces that depict the 'Two Passes and Six Stations' of the Tōkaidō within the city of Shizuoka. Why not head out on a trip along the Tōkaidō as shown in these prints which are so evocative of the journey?

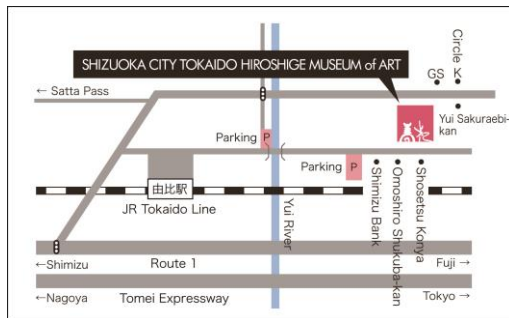
Hours 9:00 AM - 5:00 PM (last admission 30 minutes before closing time)

Closed Mondays (if it falls on a holiday, then the following Tuesday)

Adults: 510 (410) yen / University / High School Students: 300 (240) yen / Junior high students and younger: 120 (100) yen

\* ( ) indicates prices for groups of 20 or more \* Persons with proof of disability and one accompanying person are admitted free of charge

\* Shizuoka City residents Junior high students and younger as well as Shizuoka City residents over 70 are Admission admitted free of charge



### Access by train:

Take the JR Tokaido Line and get off at Yui Station.  
It is a 25-minute walk or 5-minute taxi ride from there.

### Access by car:

There are 21 parking spaces at the museum  
(Yui Honjin Park Parking)

### ■ From Osaka, Nagoya area

Exit the Tomei Expressway at the Shimizu IC and it is 20-minutes by Route 1 from there.

### ■ From Tokyo, Yokohama area

Exit the Tomei Expressway at the Fuji IC and it is 25-minutes by Route 1 from there.

## Shizuoka City Tokaido Hiroshige Museum of Art

297-1 Yui, Shimizu-ku Shizuoka City 421-3103

[URL] [www.tokaido-hiroshige.jp](http://www.tokaido-hiroshige.jp) [facebook] [www.facebook.com/tokaido.hiroshige](http://www.facebook.com/tokaido.hiroshige)

**For more information on this exhibition and press inquires**

Tel 054-375-4454 / Fax 054-375-5321 info@tokaido-hiroshige.jp

## ■ Exhibition Highlights

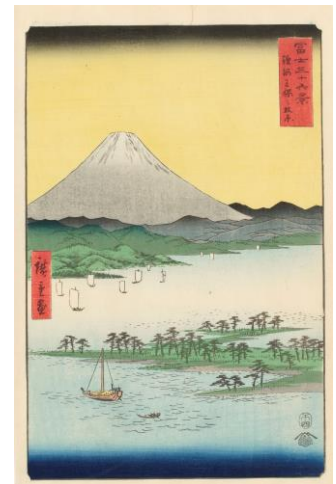
### ① Feel Like an Edo Traveller

The Vertical Tōkaidō and the Tsutaya Edition both show the Edo-period post-station towns and the surrounding landscapes in living detail, showing how travellers back in those days would journey on their own feet, or in litters or boats. We hope you will be able to get a sense of what it was like to travel the Tōkaidō vicariously through these prints.



### ② Nothing but Fuji! Shizuoka's Scenery

When you think of Shizuoka, you think of Mt. Fuji. You can get views of the mountain from several famous sites in Shizuoka, starting with Miho-no-Matsubara in Ejiri, as well as Satta Pass in Yui. The prints also feature Shizuoka green tea, Abekawa rice cakes, tororo soup, and other famous products from along the highway that remain unchanged to this day.



Top image: work exhibited in Part 2 **Utagawa Hiroshige**

*Fifty-three Stations of the Tōkaidō "Yoshiwara"*

Collection of Shizuoka City Tokaido Hiroshige Museum of Art

Bottom image: work exhibited in Part 1 **Utagawa Hiroshige**

*Thirty-six Views of Mount Fuji "The Pine Forest of Miho in Suruga Province"*

Collection of Shizuoka City Tokaido Hiroshige Museum of Art

## ■ Related Event 1 / Ukiyo-e Demonstrations & Workshops

Demonstrations and workshops by The Adachi Foundation for the Preservation of Woodcut Printing who continue the Edo-period techniques of woodcut printing. All ages are welcome to participate.

**Presenter:** The Adachi Foundation for the Preservation of Woodcut Printing

**When:** May 3 (Sun.); Morning / 11:00 - 12:30, Afternoon / 14:00 - 15:30

**Cost:** Free \*museum entrance fee is required

**Registration:** Applications accepted by telephone (054-375-4454) or through our website. Printing workshop spaces are limited to the first 15 people (pre-registration recommended). Registration will close once all spaces are filled.

## ■ Related Event 2 / Gallery Talks by a Museum Curator

**Part 1** "Famous Sights of the Fifty-three Stations" April 12 (Sun.) 13:00 - 13:30

**Part 2** "Fifty-three Stations of the Tōkaidō" May 10 (Sun.) 13:00 - 13:30

**Cost:** Free \*museum entrance fee is required

**Language:** Japanese

Meeting place is the entrance hall of the museum. No pre-registration needed; unlimited enrollment

## Utagawa Hiroshige

### Part 1 / Famous Sights of the Fifty-three Stations (The Vertical Tōkaidō)

Hiroshige was 59 when he started work on this series. Its vertical orientation has led to the nickname 'The Vertical Tōkaidō'. There are many dynamic compositions looking down diagonally from above in this, the last Tōkaidō series that Hiroshige created.

### Part 2 / Fifty-three Stations of the Tōkaidō (Tsutaya Edition)

This series was created by Hiroshige when he was in his early fifties. Its nickname is Tsutaya Edition as it was published by Tsutaya Kichizō. While the prints are small, they depict the towns and people clearly, showing what it was like to travel in those days.



Left image: work exhibited in Part 1

#### Utagawa Hiroshige / Famous Sights of the Fifty-three Stations "Yui: The Frightful Satta Pass"

Collection of Shizuoka City Tokaido Hiroshige Museum of Art  
Satta Pass, between the post-station towns of Yui and Okitsu, was one of the toughest stretches of the Tōkaidō, but it was, however, famous for its beautiful views of Mt. Fuji.

Right image: work exhibited in Part 2

#### Utagawa Hiroshige Fifty-Three Stations of the Tōkaidō Road "Kanbara"

Collection of Shizuoka City Tokaido Hiroshige Museum of Art  
The Fuji River, flowing between the post-station towns of Yoshiwara and Kanbara, was known as the fastest stream along the Tōkaidō, and as there were no bridges, travellers had to use boats to cross.

## Masterpieces of 'Two Passes and Six Stations'

'Two Passes and Six Stations' is the general term referring to the six post-station towns of Kanbara, Yui, Okitsu, Ejiri, Fuchū, and Mariko that lie within what is now the city of Shizuoka, as well as the two passes of the Satta Pass between Yui and Okitsu and the Utsunoya Pass between Mariko and Okabe, both of which were known as difficult stretches of the journey.



Work exhibited in Part 2

#### Utagawa Hiroshige / Fifty-three Stations "Yui" Collection of Shizuoka City Tokaido Hiroshige Museum of Art

## Artwork

\*Changes may be made to the exhibit and its displayed works.

### Main Exhibit Room

Part 1	Utagawa Hiroshige	<i>Famous Sights of the Fifty-three Stations (The Vertical Tōkaidō)</i> [55 works]
Part 2	Utagawa Hiroshige	<i>Fifty-three Stations of the Tōkaidō (Tsutaya Edition)</i> [54 works]

### Small Exhibit Room / Masterpieces of 'Two Passes and Six Stations'

#### Part 1 [Total of 19 works]

Utagawa Hiroshige  
Utagawa Toyokuni III *Fifty-three Stations by Two Brushes* [7 works]

Utagawa Toyokuni III *Actors at the Fifty-three Stations of the Tōkaidō Road* [3 works]

Utagawa Hiroshige *Kyōka Tōkaidō* [7 works]

Utagawa Hiroshige *Famous Places of Our Country "Mount Fuji from Satta"*

Utagawa Hiroshige *Thirty-six Views of Mount Fuji (vertical) "The Pine Forest of Miho in Suruga Province"*

#### Part 2 [Total of 19 works]

Utagawa Hiroshige  
Utagawa Toyokuni III *Fifty-three Pairings for the Tōkaidō Road* [7 works]  
Utagawa Kuniyoshi

Utagawa Hiroshige *Fifty-three Stations* [7 works]

Utagawa Hiroshige *Thirty-six Views of Mount Fuji (horizontal)* [2 works]

Utagawa Hiroshige *Cutout Pictures of the Tōkaidō Road* [2 works]

Utagawa Hiroshige *Famous Places of Our Country "Ferry Boats on the Fuji River in Suruga Province"*



## About the Museum

### Shizuoka City Tokaido Hiroshige Museum of Art

Shizuoka City Tokaido Hiroshige Museum of Art is the first art museum in Japan to focus on the works of Edo Ukiyo-e Artist, Utagawa Hiroshige. There are approximately 1400 landscape woodblock prints and other works within the Hiroshige collection, including Hiroshige's masterpieces *Fifty-Three Stations of the Tōkaidō* (Tōkaidō Hoeidō Edition) and *One Hundred Famous Views of Edo*.

We aim to promote a new culture of Ukiyo-e through curated exhibitions connecting Ukiyo-e with contemporary works. Visitors can enjoy the magnificence of internationally loved Ukiyo-e works from Edo to the present.



### About Hiroshige

Utagawa Hiroshige (1797–1858) Ukiyo-e artist

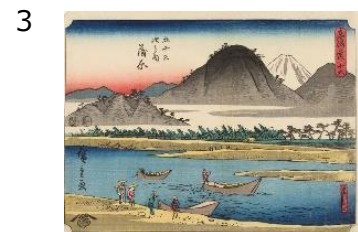
He became a pupil of Toyohiro Utagawa when he was about 15 years old. His work *Fifty Three Station of the Tōkaidō* (Tōkaidō Hoeidō Edition) caused a great sensation, after that he continued to create Ukiyo-e prints about the Tōkaidō and the landscape of Edo and became famous as landscape artist. While he was working on what is considered his late-life masterpiece, *One Hundred Famous Views of Edo*, Hiroshige fell ill and passed away at the age of 62. Hiroshige's bold composition and lyrical style is loved by all and his works continue to influence artists all over the world.



Utagawa Toyokuni III / Memorial Portrait of Utagawa Hiroshige  
Collection of Shizuoka City Tokaido Hiroshige Museum of Art

## Press Images

High-resolution data for the following 5 images are available for editorial coverage of exhibitions. Please send your request by email or fax after reading the usage conditions on the following page.



#### □Titles and Credits

- |                      |   |
|----------------------|---|
| 1. Poster image      | ©Shizuoka City Tokaido Hiroshige Museum of Art  |
| 2. Utagawa Hiroshige | <i>Famous Sights of the Fifty-three Stations "Yui: The Frightful Satta Pass"</i><br>Collection of Shizuoka City Tokaido Hiroshige Museum of Art   |
| 3. Utagawa Hiroshige | <i>Fifty-Three Stations of the Tōkaidō Road "Kanbara"</i> Collection of Shizuoka City Tokaido Hiroshige Museum of Art                             |
| 4. Utagawa Hiroshige | <i>Thirty-six Views of Mount Fuji "The Pine Forest of Miho in Suruga Province"</i><br>Collection of Shizuoka City Tokaido Hiroshige Museum of Art |
| 5. Utagawa Hiroshige | <i>Fifty-three Stations "Yui"</i> Collection of Shizuoka City Tokaido Hiroshige Museum of Art   |

#### 〈Usage Conditions〉

- \* The images may be used only for editorial press purposes in conjunction with this exhibition and may not be used after the exhibition is over.
- \* Images may not be altered (trimmed, combined with other images or text, etc..).
- \* Images must be reproduced with notice of attribution.
- \* When an image is used, please email us a review copy
- \* Please send a final copy for our records (publication copy, URL, DVD video, CD, etc..)

## Along the Tōkaidō:

### Shizuoka's Two Passes and Six Stations

#### Press Image Data Request

TO: Tokaido Hiroshige Museum of Art Press Desk

Fax. 054-375-5321 E-mail. info@tokaido-hiroshige.jp

■ Check the box for image data to be requested.

1.  Poster image
2.  Utagawa Hiroshige / *Famous Sights of the Fifty-three Stations* "Yui: The Frightful Satta Pass"
3.  Utagawa Hiroshige / *Fifty-Three Stations of the Tōkaidō Road* "Kanbara"
4.  Utagawa Hiroshige / *Thirty-six Views of Mount Fuji* "The Pine Forest of Miho in Suruga Province"
5.  Utagawa Hiroshige / *Fifty-three Stations* "Yui"

Your Company:

---

Publication's Name:

---

Your Name:

---

TEL :

FAX :

---

E-mail :

---

When do you need the image by (month / date / time) ?

\*Can be sent between 10:00 – 16:00 (JST)

Planned publishing date (section title)

---

#### 〈Usage Conditions〉

- \* The images may be used only for editorial press purposes in conjunction with this exhibition and may not be used after the exhibition is over.
- \* Images may not be altered (trimmed, combined with other images or text, etc..).
- \* Images must be reproduced with notice of attribution.
- \* When an image is used, please email us a review copy
- \* Please send a final copy for our records (publication copy, URL, DVD video, CD, etc..)

Please send us information if you introduce our program.

Tel 054-375-4454 / Fax 054-375-5321 info@tokaido-hiroshige.jp