



Meisho & Nigao: Ukiyo-e Matchup of Famous Sites and Portraits

2014年11月18日(火) - 2015年2月1日(日)

年末年始休館日 12月28日(日) - 1月5日(月)

Part 1: 2014年11月18日(火) - 2014年12月21日(日) 【雙筆五十三次】全56点(目録を含む)

Part 2: 2014年12月23日(火祝) - 2015年2月1日(日) 【東都高名會席盡】全50点、「広重死絵」1点

現代木版画出版作家: 浦田周社、前田光一、前田守一、山藤章二、和田誠

主催: 静岡市東海道広重美術館(館長菅原浩一、副館長山本浩二) 協力: 公益財団法人アズナ伝統木版画保存財団、静岡印刷協会、静岡印刷協会

2014 November 18 (Tue.) - 2015 February 1 (Sun.) The museum will be closed for the new year holiday from Dec. 28 (Sun.) to Jan. 5 (Mon.)

Part 1: 2014 November 18 (Tue.) - 2014 December 21 (Sun.)

Part 2: 2014 December 23 (Tue./Holiday) - 2015 February 1 (Sun.)

Organizer: Shizuoka City Tokaido Hiroshige Museum of Art  
Designated Manager: SPO Higashiyama  
Cooperation: The Aizumi Foundation for the Preservation of Woodblock Printing, Shizuoka Prefecture Print Association, Shizuoka City Print Association

 静岡市東海道広重美術館  
SHIZUOKA CITY TOKAIDO HIROSHIGE MUSEUM of ART

お問合せ: 〒421-3103 静岡市葵区清水区由比297-1 Tel: 054-375-4454(代) Fax: 054-375-5321 mail: info@tokaido-hiroshige.jp www.tokaido-hiroshige.jp

## Meisho & Nigao: Ukiyo-e Matchup of Famous Sites and Portraits

2014 November 18 (Tue.) - 2015 February 1 (Sun.)

The museum will be closed for the new year holiday from Dec. 28 (Sun.) to Jan. 5 (Mon.)

Part 1: 2014 November 18 (Tue.) - 2014 December 21 (Sun.)

Part 2: 2014 December 23 (Tue./Holiday) - 2015 February 1 (Sun.)

*Meisho & Nigao*: Ukiyo-e Matchup of Famous Sites and Portraits

2014 November 18 (Tue.) – 2015 February 1 (Sun.)

Part 1 / 2014 November 18 (Tue.) – 2014 December 21 (Sun.)

Part 2 / 2014 December 23 (Tue./Holiday) – 2015 February 1 (Sun.)

The museum will be closed for the new year holiday from Dec. 28 (Sun.) to Jan.5 (Mon.)

Organizer: Shizuoka City Tokaido Hiroshige Museum of Art

Designated Manager: NPO Hexaproject

Cooperation: The Adachi Foundation for the Preservation of Woodcut Printing

Shizuoka Prefecture Print Association

Shizuoka City Print Association

Drawing the scenery of Tōkaidō and Edo, Utagawa Hiroshige was known as an artist of famous places, while Utagawa Toyokuni III excelled at portraits of kabuki actors and beautiful women.

This exhibition presents the *Fifty-three Stations by Two Brushes*, plus the *Famous Restaurants of the Eastern Capital*, two series in which these late Edo Period legends matched up their respective artistic expertise onto one screen. Also on display are woodblock prints of famous places in Shizuoka City, including the six stations and two passes of the Tokaido by Shizuoka Prefecture printmakers, as well as figurative woodblock prints by famous illustrators who have been active since the 1970's and are known for their portraits of celebrities.

Please enjoy this matchup of famous site and portrait works by Edo period and present-day popular artists.

## ■Artwork

\*Changes may be made to the exhibit and its displayed works.

### Ukiyo-e

Part 1	Utagawa Hiroshige, Utagawa Toyokuni III	<i>Fifty-three Stations by Two Brushes</i> [56 works; inc. catalog]
Part 2	Utagawa Hiroshige, Utagawa Toyokuni III Utagawa Toyokuni III	<i>Famous Restaurants of the Eastern Capital</i> [50 works] <i>Memorial Portrait of Utagawa Hiroshige</i> [1 work]

### Modern Woodblock Print

Part 1	Kanetaka Urata Shōji Yamafuji	<i>Miho Pine Trees and Mt. Fuji</i> etc. [10 works] <i>Six Masters of Comic Story Teller</i> series [6 works]
Part 2	Kōichi Maeda Morikazu Maeda Makoto Wada	<i>Road to the Mountain Pass</i> etc. [5 works] <i>Stone between the Waves</i> etc. [5 works] <i>Six constellations</i> series [6 works]

## ■Exhibition Highlights

### ■Ukiyo-e Matchup of Famous Sites and Portraits

Hiroshige drew famous places of Tōkaidō and Edo in a lyrical style for people who yearned to travel. Toyokuni III received much acclaim for his glamorously drawn portraits of Kabuki actors who were the idols of Edo. One can enjoy the matchup of their varied styles in these collaboration works of Ukiyo-e.

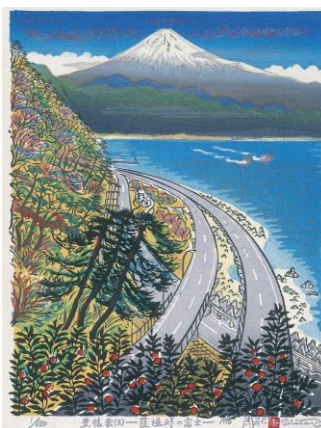


Part 1

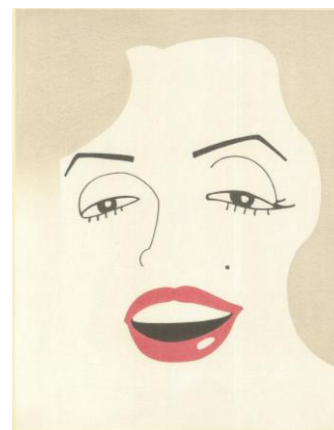
Utagawa Hiroshige, Utagawa Toyokuni III  
*Fifty-three Stations by Two Brushes "Ejiri"*

### ■Modern Famous Sites and Portraits

From realistic to abstract, a rich variety of scenery woodblock prints featuring famous places in Shizuoka City are on display, including the six stations and two passes of the Tōkaidō. Also on display are figurative woodblock prints of the stars of yesteryear, drawn in a deformed caricature style. Find delight in this matchup of “*Meisho* (famous site)” and “*Nigao* (Portrait)” works by a myriad of artists.



Part 1/Kanetaka Urata  
*Mt. Fuji from Satta Pass*  
Collection of the artist



Part 2/Makoto Wada  
*River of No Return Marilyn Monroe*  
Collection of The Adachi Foundation for the Preservation of Woodcut Printing

### ■Decipher the keywords hidden in the Ukiyo-e

The collaboration of popular artists Hiroshige and Toyokuni III is not the only feature these exhibited works. In the background of Edo restaurants drawn by Hiroshige, Toyokuni III drew in witty-style scenes and characters from kabuki programs which have a connection to the restaurant.

In the *Famous Restaurants of the Eastern Capital* series work “The Hashimoto Restaurant, Ushiwakamaru”, the story of the encounter with Benkei and his future master Ushiwaka-maru (Yoshitsune) is shown.



Part 2

Utagawa Hiroshige, Utagawa Toyokuni III  
*Famous Restaurants of the Eastern Capital*  
“The Hashimoto Restaurant, Ushiwakamaru”



■Utagawa Hiroshige, Utagawa Toyokuni III

Part 1

*Fifty-three Stations by Two Brushes*

*Fifty-three Stations by Two Brushes* is a full-size series printed by Maruya Kyūshirō between 1854 and 1857. Utagawa Hiroshige, popular for his landscapes of famous sites along the Tokaido and in Edo, and Utagawa Toyokuni III, famed for his portraits of actors and beauties, collaborated to each illustrate their specialty within the same full-size colour woodblock print. The upper parts of the panel, which Hiroshige would create, featured post-station towns along the Tokaido, or the famous sites around them, while the foregrounds, done by Toyokuni III, featured historical characters or scenes from kabuki plays with a connection to these towns, along with local customs and travellers.



Utagawa Hiroshige, Utagawa Toyokuni III  
*Fifty-three Stations by Two Brushes* “Ōiso”

This shows the scene where Tora Gozen is combing the hair of Soga-no-Jūrō Sukenari. The *Soga Monogatari*, which features them both, depicts the Oiso prostitute Tora as the favoured courtesan of Jūrō. After a series of struggles, the Soga brothers finally strike down Kudō Suketsune to avenge their father, but Jūrō dies in this fight, and so Tora devotes the rest of her life to his memory. In the background is the Koyurugi-no-Iso coast, a site often mentioned in poems.



Utagawa Hiroshige, Utagawa Toyokuni III  
*Fifty-three Stations by Two Brushes*  
“Yoshiwara”

When heading along the Tokaido to Kyoto, the traveller heads north coming into the Yoshiwara post-station town, so Mt. Fuji, which has constantly been on the traveller's right, now appears to their left. This was known as ‘Left Fuji’. The monk in the black-dyed cloak looking up at Fuji is the poet Saigyō Hōshi, in a composition which recalls his poem, ‘Like the smoke of Fuji, waving in the wind as it disappears into the sky, do my thoughts vanish to I know not where’.



Utagawa Hiroshige, Utagawa Toyokuni III  
*Fifty-three Stations by Two Brushes* “Yui”

This shows the sisters Miyagino and Shinobu practicing their sword and sickle-and-chain skills in a scene from *Go-Taiheiki shiraishibanashi* (where the sisters' revenge was paralleled with the 1651 Keian Uprising of Yui Shōsetsu). With their father Shirōzaemon killed by Shiga Daishichi (Tanabe Shima), the two of them were saved by Uji Jōetsu (a Confucian scholar from Yui, the model for Yui Shōsetsu) and his companions, and later were able to avenge their father. The top part shows the Satta Pass, a famous site for viewing Mt. Fuji.

■Utagawa Hiroshige, Utagawa Toyokuni III

Part 2

*Famous Restaurants of the Eastern Capital*

*Famous Restaurants of the Eastern Capital* is a full-size series published by the printer Fujiokaya Keijirō between 1852 and 1853. Against backgrounds of Edo restaurants drawn by Hiroshige are kabuki characters drawn by Toyokuni III, with the titles of both elements containing shared aspects that connect them. This was published after both Toyokuni III, with his *Famous Restaurants of the Time* (early Bunsei era, circa 1820), and Hiroshige, with his *Famous Restaurants of Edo* (mid- to late-Tenpo era, circa 1840), had found success with restaurant themes.



Utagawa Hiroshige, Utagawa Toyokuni III  
*Famous Restaurants of the Eastern Capital* "The Umenoki Restaurant, Kansyōjyō"

This shows the Umenoki teahouse that stood in the back streets of Shinjuku and the central character of *Sugawara Denjū Tenarai Kagami*, Kan Shōjō (Sugawara-no-Michizane). This depicts the 'Flying Plum' legend in the play, where a plum tree from his home flew to Kan Shōjō in exile in Dazaifu, Kyushu, as a result of a plot by Fujiwara-no-Shihei. Kan Shōjō is shown holding a branch of the tree in his mouth, thus linking it with the name of the restaurant ('Plum Tree').



Utagawa Hiroshige, Utagawa Toyokuni III  
*Famous Restaurants of the Eastern Capital* "The Musashiya Restaurant, Benkei"

This shows the Musashi-ya restaurant with Benkei from *Yoshitsune Senbon Zakura*. Benkei, a warrior-priest in the service of Minamoto-no-Yoshitsune, had pledged his life to loyally serve his master, who was being pursued by both the Taira Clan and his brother Yoritomo, who had accused him of conspiracy. Musashi-bō was Benkei's priestly name, thus providing the connection.



Utagawa Hiroshige, Utagawa Toyokuni III  
*Famous Restaurants of the Eastern Capital* "The Yaohan Restaurant, Ochiyo"

This shows the famous restaurant Yaohan with O-Chiyo, the wife of the grocer Yaoya Hanbe, the main character in the play *Shinjū Yoi Gōshin*. Having failed at her second marriage, O-Chiyo is bullied by her mother-in-law during her third husband's absence and thrown out of her house. Despairing of any hope for the future, she and her husband Hanbe commit suicide together. The restaurant name reflects their surname, Yaoya.

■Introduction: Modern Woodblock Prints and Exhibiting artists

Scenery woodblock prints

【Part 1】

**Kanetaka Urata (b. 1939)**

Born in Shizuoka City; in 1958 Urata became the 6<sup>th</sup> generation in his family to head the Ukiyo-e print studio “*Hankuma*” which has operated since the Edo era. Designated as a Selected Preservation Techniques Holder of Important Folk Cultural Properties by Agency for Cultural Affairs in 1976. Conducts demonstration of Ukiyo-e printmaking at this museum in 2005.

1988 Grand prize of 4th Hamamatsu City Museum Print Competition

1999 Shizuoka Prefecture Culture Encouragement Prize

Advisor of Shizuoka Prefecture Print Association and Shizuoka City Print Association



Drawn in a contrasting composition are the vivid Miho-Matsubara and heavy Mt. Fuji. Miho-matsubara has long been known for its magnificent view of Mt. Fuji and is still crowded with many people today.

Part 1 /Kanetaka Urata  
*Miho Pine Trees and Mt. Fuji*  
Collection of the artist

【Part 2】

**Kōichi Maeda (b. 1936)**

Born in Tokyo; moved to Suntō District in Shizuoka Prefecture in 1962. Maeda travels and creates woodblock prints of Japanese scenery. In 1989 was commissioned from the Shizuoka Prefecture to produce works for the exhibition “Beauty of Shizuoka” which are in the Shizuoka Prefecture collection.

1977 Japan Print Association Prize in the Shizuoka Prefecture Print Association Exhibition

1997 Prefectural Governor Prize in the Shizuoka Prefecture Print Association Exhibition

Member of the Shunyō-kai association and the Shizuoka Prefecture Print Association.



This work is one of a series drawings of the Yui area. The way to Kurasawa from Satta pass is expressed skillfully in gentle color.

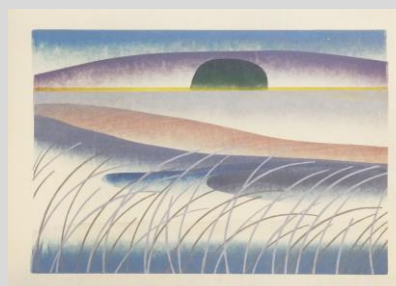
Part 2/Kōichi Maeda  
*Road to the Mountain Pass*  
Collection of the artist

**Morikazu Maeda (1932–2007)**

Born in Hamamatsu City, Shizuoka Prefecture. In 1966 Maeda participated in the “*Genshoku*” artist group formed in Shizuoka. In 1985 he visited the USA to teach woodblock printing at the University of Minnesota through the Agency for Cultural Affairs’s Artist Overseas Deployment System Program.

1996 Solo exhibition in California and received commendation from the California state legislature

2001 Prize of the Governor of Shizuoka for his contribution to culture promotion



Abe River, Shizuoka City. The use of deformation of form and unrestricted color create a fantastical atmosphere.

Part 2/Morikazu Maeda  
*Stone between the Waves*  
Private Collection



■Introduction: Modern Woodblock Prints and Exhibiting artists

**Figurative woodblock prints**

**【Part 1】**

**Shōji Yamafuji (b. 1937)**

Born in Tokyo. Yamafuji is an illustrator known for his caricature work. As an entertainment commentator, he also works in entertainment production.

- 1970 1st Kodansha Publishing Culture Prize for illustration
- 1971 17th Bungei Shunjū Manga Prize
- 1983 31st Kikuchi Kan Prize
- 2004 Awarded the Medal of Honor with Purple Ribbon



From the master rakugo storyteller series “*Six Masters of Comic Story Teller*”. Kokontei Shinsho, a famous twentieth century rakugo storyteller, is lovingly drawn presenting his specialty, the “*Kaen daiko*” story.

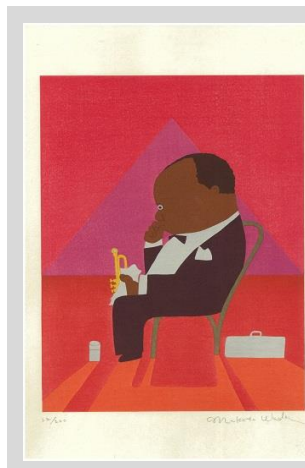
Part 1/Shōji Yamafuji  
*Kokontei Shinsho*  
Collection of The Adachi Foundation for the Preservation of Woodcut Printing

**【Part 2】**

**Makoto Wada (b. 1936)**

Born in Osaka. Aside from being a well-known Japanese designer and illustrator Wada is a scriptwriter and director as well. He has been in charge of the “*Shūkan Bunshun*” covers since 1977.

- 1974 5th Kodansha Publishing Culture Prize for book design
- 1988 31st Blue Ribbon Award for the movie “*Ruby the Phantom Thief*” in which he directed and wrote
- 1994 42nd Kikuchi Kan Prize
- 1997 43rd Mainichi Design Prize



From the musicians and movie stars series “*Six constellations*”. The American Jazz trumpeter Louis Armstrong, nicknamed Satchmo, is drawn in his dressing room waiting for his turn to play.

Part 2/Makoto Wada  
*Potato Head Blues Louis Armstrong*  
Collection of The Adachi Foundation for the Preservation of Woodcut Printing

■Cooperation

**The Adachi Foundation for the Preservation of Woodcut Printing**

The Adachi Foundation for the Preservation of Woodcut Printing is the only remaining publisher in Japan with craftsmen preserving the high skills to make Ukiyo-e. In order to preserve and inherit traditional woodcut printing techniques developed through Ukiyo-e from the Edo Period, activities vary around a core of growing technicians. Adachi continues to present many works, from reprinting Ukiyo-e woodcut prints to works by modern artists.

## ■Related Event

### ■Related Event 1 / Gallery Talk by Kanetaka Urata “All About Modern-day Printing”

A conversation between Kanetaka Urata with Makoto Kawashima (Yui New Year’s Greeting Card Contest Head Judge)

□Date/Time November 23 (Sun.) 13:00 - 13:40

□Cost Free \*museum entrance fee is required

Meeting place is the entrance hall of the museum. No pre-registration needed; unlimited enrollment

### ■Related Event 2 / Gallery Talks by a Museum Curator

□Date/Time Part 1 “*Fifty-three Stations by Two Brushes*” 2014 November 30 (Sun.) 13:00 - 13:30

Part 2 “*Famous Restaurants of the Eastern Capital*” 2015 January 11 (Sun.) 13:00 - 13:30

□Cost Free \*museum entrance fee is required

Meeting place is the entrance hall of the museum. No pre-registration needed; unlimited enrollment.

## ■Information

### 9th Yui New Year’s Greeting Card Contest

□Entries Accepted 2014 November 1 (Sat.) – 2015 January 8 (Thu.) \*no late entries accepted

□Award Categories Grand Prize (certificate & prize): 1

Excellence Award (certificate & prize): 2

Special Award (certificate & prize): 2

Selected Work Award (certificate & extra prize): 5

Honorable Mention (certificate & extra prize): multiple recipients

All entries will receive a participation prize.

□Participant Categories

- Elementary School Students
- Junior & Senior High School Students
- Adults

\*Only those elementary school age and older are eligible; regardless of being a professional or amateur.

\*Details are on our website.

---

\*Changes may be made to the exhibit content and displayed works.



## ■About the Museum

### Shizuoka City Tokaido Hiroshige Museum of Art

Shizuoka City Tokaido Hiroshige Museum of Art is located at the Honjin site of the old Tōkaidō's 16th post town Yui-shuku. It is the first art museum in Japan to focus on the works of Edo Ukiyo-e Artist, Utagawa Hiroshige. There are approximately 1400 landscape woodblock prints and other works within the Hiroshige collection, including Hiroshige's masterpieces *Fifty-Three Stations of the Tōkaidō* (Tōkaidō Hoeidō Edition), *Sixty-Nine Stations of the Kisokaidō* and *One Hundred Famous Views of Edo*. We aim to promote a new culture of Ukiyo-e through curated exhibitions connecting Ukiyo-e with contemporary works. Visitors can enjoy the magnificence of internationally loved Ukiyo-e works from Edo to the present.



### About Hiroshige

Utagawa Hiroshige (1797–1858) Ukiyo-e artist

He became a pupil of Toyohiro Utawaga when he was about 15. Later he came to use the artist name of Hiroshige (広重) by combining the character of “Hiro (広)” from Toyohiro’s name and “Shige (重)” from his real name. His work *Fifty Three Station of the Tōkaidō* (Tōkaidō Hoeidō Edition) which caused a great sensation, was published by Hoeidō when he was around 37. After that he continued to create Ukiyo-e prints about the Tōkaidō and the landscape of Edo and became famous as landscape artist. While he was working on what is considered his late-life masterpiece, *One Hundred Famous Views of Edo*, Hiroshige fell ill and passed away at the age of 62. Hiroshige's bold composition and lyrical style is loved by all and his works continue to influence artists all over the world.



Utagawa Toyokuni III  
Memorial Portrait of Utawaga Hiroshige

Hours 9:00 AM – 5:00 PM (last admission 30 minutes before closing time)

Closed Mondays (if it falls on a holiday, then the following Tuesday)

**\*The museum will be closed for the new year holiday from Dec. 28 (sun.) to Jan. 5 (Mon,)**

Adults: 510 (410) yen / University / High School Students: 300 (240) yen / Junior high students and younger: 120 (100) yen

\* ( ) indicates prices for groups of 20 or more

\* Persons with proof of disability and one accompanying person are admitted free of charge

\* Shizuoka City residents Junior high students and younger as well as Shizuoka City residents over 70 are Admission admitted free of charge

\* The admission fee was changed from April 1, 2014

Organizer: Shizuoka City Tokaido Hiroshige Museum of Art

Designated Manager: NPO Hexaproject

Cooperation: The Adachi Foundation for the Preservation of Woodcut Printing

Shizuoka Prefecture Print Association

Shizuoka City Print Association



静岡市東海道広重美術館

SHIZUOKA CITY TOKAIDO HIROSHIGE MUSEUM of ART

297-1 Yui, Shimizu-ku

Shizuoka City 421-3103

Tel 054-375-4454 / Fax 054-375-5321

[URL] [www.tokaido-hiroshige.jp](http://www.tokaido-hiroshige.jp)

[facebook] [www.facebook.com/tokaido.hiroshige](http://www.facebook.com/tokaido.hiroshige)

□ Access by train:

Take the JR Tokaido Line and get off at Yui Station.  
It is a 25-minute walk or 5-minute taxi ride from there.

□ Access by car:

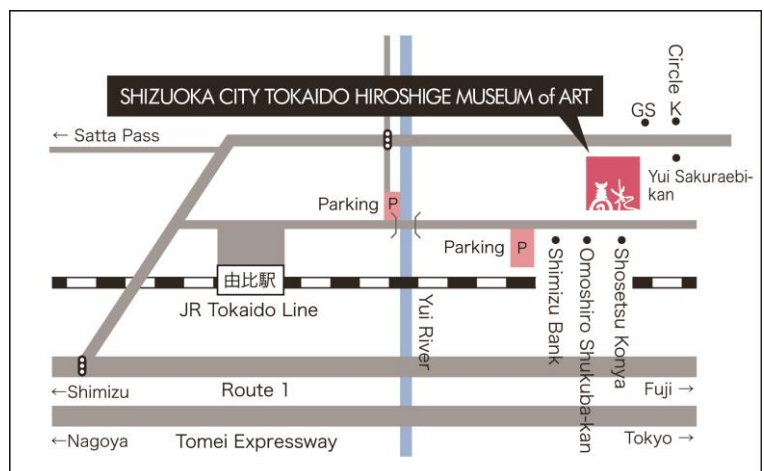
There are 21 parking spaces at the museum  
(Yui Honjin Park Parking)

【 From Osaka, Nagoya area 】

Exit the Tomei Expressway at the Shimizu IC and it is 20-minutes  
by Route 1 from there.

【 From Tokyo, Yokohama area 】

Exit the Tomei Expressway at the Fuji IC and it is 25-minutes  
by Route 1 from there.



For more information on this exhibition and press inquiries

Shizuoka City Tokaido Hiroshige Museum of Art Tel 054-375-4454 / Fax 054-375-5321 info@tokaido-hiroshige.jp

## ■Press Images

High-resolution data for the following 8 images are available for editorial coverage of exhibitions. Please send your request by email or fax after reading the usage conditions on the following page.



## □Titles and Credits

- |    |  |  |
|----|--|--|
| 1. | Poster image                               | ©Shizuoka City Tokaido Hiroshige Museum of Art   |
| 2. | Utagawa Hiroshige,<br>Utagawa Toyokuni III | 『Fifty-three Stations by Two Brushes “Yui”』 From the Shizuoka City Tokaido Hiroshige Museum of Art collection                                    |
| 3. | Utagawa Hiroshige,<br>Utagawa Toyokuni III | 『Famous Restaurants of the Eastern Capital “The Musashiya Restaurant, Benkei”』 From the Shizuoka City Tokaido Hiroshige Museum of Art collection |
| 4. | Shōji Yamafuji                             | 『Kokontei Shinsho』 Collection of The Adachi Foundation for the Preservation of Woodcut Printing  |
| 5. | Makoto Wada                                | 『Potato Head Blues Louis Armstrong』 Collection of The Adachi Foundation for the Preservation of Woodcut Printing                                 |
| 6. | Kanetaka Urata                             | 『Miho Pine Trees and Mt. Fuji』 Collection of the artist  |
| 7. | Kōichi Maeda                               | 『Road to the Mountain Pass』 Collection of the artist   |
| 8. | Morikazu Maeda                             | 『Stone between the Waves』 Private Collection   |

## 〈Usage Conditions〉

- \* The images may be used only for editorial press purposes in conjunction with this exhibition and may not be used after the exhibition is over.
- \* Images may not be altered (trimmed, combined with other images or text, etc...).
- \* Images must be reproduced with notice of attribution.
- \* When an image is used, please email us a review copy.
- \* Please send a final copy for our records (publication copy, URL, DVD video, CD, etc...)

## *Meisho & Nigao*: Ukiyo-e Matchup of Famous Sites and Portraits

### Press Image Data Request

TO: Tokaido Hiroshige Museum of Art Press Desk

Fax. 054-375-5321 E-mail. info@tokaido-hiroshige.jp

■Check the box for image data to be requested.

1. Poster image
2. Utagawa Hiroshige, Utagawa Toyokuni III 『*Fifty-three Stations by Two Brushes “Yui”*』
3. Utagawa Hiroshige, Utagawa Toyokuni III 『*Famous Restaurants of the Eastern Capital “The Musashiya Restaurant, Benkei”*』
4. Shōji Yamafuji 『*Kokontei Shinsho*』
5. Makoto Wada 『*Potato Head Blues Louis Armstrong*』
6. Kanetaka Urata 『*Miho Pine Trees and Mt. Fuji*』
7. Kōichi Maeda 『*Road to the Mountain Pass*』
8. Morikazu Maeda 『*Stone between the Waves*』

Your Company:

Publication's Name:

Your Name:

TEL:

FAX:

E-mail:

When do you need the image by (month / date / time) ?

\*Can be sent between 10:00 – 16:00 (JST)

Planned publishing date (section title)

〈Usage Conditions〉

\* The images may be used only for editorial press purposes in conjunction with this exhibition and may not be used after the exhibition is over.

\* Images may not be altered (trimmed, combined with other images or text, etc...).

\* Images must be reproduced with notice of attribution.

\* When an image is used, please email us a review copy.

\* Please send a final copy for our records (publication copy, URL, DVD video, CD, etc...)

Please send us information if you introduce our program.

Tel 054-375-4454 / Fax 054-375-5321 info@tokaido-hiroshige.jp