



江戸のそら

The Edo Skies - Delicate climates in Hiroshige's Ukiyoe -
 広重の浮世絵に見る気候表現

2019年2月5日(火) - 3月31日(日)

Part1 2019年2月5日(火) - 3月3日(日) February 5 (Tue) - March 3 (Sun) 2019
 Part2 2019年3月5日(火) - 3月31日(日) March 5 (Tue) - March 31 (Sun) 2019

同時開催 職人ワザ - 浮世絵を支える彫りと摺り -
 Skills of the Master Craftsman - Carving and Print Techniques that Support Ukiyoe -

本展では、浮世絵を支えた彫師・摺師の様々な技法を、
 間近でご覧いただけます。
 In this exhibition you will be able to see various techniques of
 carvers and printers that support the creation of Ukiyoe pictures.

主催：静岡市東海道広重美術館 (指定管理者：特定非営利活動法人ヘキサプロジェクト) Organizer: Shizuoka City Tokaido Hiroshige Museum of Art Designated Manager: NPO Hexaproject


 静岡市東海道広重美術館
 SHIZUOKA CITY TOKAIDO HIROSHIGE MUSEUM of ART

受付時間 10:00 - 17:00 (最終入館 16:30)
 休館日 2019年2月11日(月) 2019年3月10日(日)
 観覧料 大人 500円 中学生以下 250円
 観覧料 500円以上の方には、入館料が無料となります。

本展の収益の一部は、静岡市東海道広重美術館の運営に充てられます。
 本展の収益の一部は、静岡市東海道広重美術館の運営に充てられます。

本展の収益の一部は、静岡市東海道広重美術館の運営に充てられます。
 本展の収益の一部は、静岡市東海道広重美術館の運営に充てられます。

Outline

Utagawa Hiroshige has masterfully reproduced rich landscapes and beautiful sceneries that skillfully captures elements of weather, time, and seasons. Please enjoy the many faces of Edo skies that are successfully developed by the skills of Hiroshige and the emotions of many were also captured in his work.



静岡市東海道広重美術館
 SHIZUOKA CITY TOKAIDO HIROSHIGE MUSEUM of ART

The Edo Skies -Exhibition Highlights-

■ Delicate climates in Hiroshige's Ukiyo-e ■

Utagawa Hiroshige, who was critically acclaimed as a Meisyo-eshi (landscape painter), was especially talented at effectively incorporating the change of seasons, change in weather, and the passage of time. The pieces that cleverly captures transitions in the skies help us see what it was like in the Edo period through the Ukiyo-e medium.

Please enjoy the various "skies" depicted in Ukiyo-e and the people of Edo that live underneath it.

Rainy



Part1: Utagawa Hiroshige
Sixty-Nine Stations of the Kisokaidō
"Nakatsugawa"



Part2: Utagawa Hiroshige
One Hundred Famous Views of Edo
"Sudden Shower over Shin-Ōhashi Bridge and Atake"

Snowy



Part1: Utagawa Hiroshige
Famous Places in the Eastern Capital
"Zōjō-ji Temple at Shiba in Snow"



Part2: Utagawa Hiroshige
Famous Places in Edo
"Snowy Morning at Nihonbashi Bridge"

Night



Part1: Utagawa Hiroshige
One Hundred Famous Views of Edo
"Bamboo Yards at Kyōbashi Bridge"

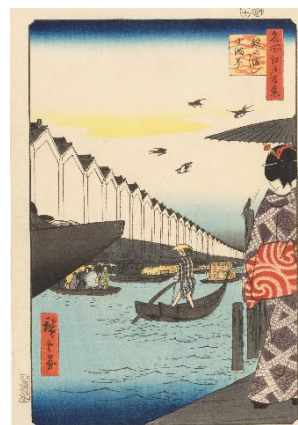


Part2: Utagawa Hiroshige
Sixty-Nine Stations of the Kisokaidō
"Seba"

Sunny



Part1: Utagawa Hiroshige
Famous Sights of the Fifty-three Stations
"Yoshiwara: Floating Islands in Fuji Marsh"



Part2: Utagawa Hiroshige
One Hundred Famous Views of Edo
"Yoroi Ferry in Koami-chō"

※All Shizuoka City Tokaido Hiroshige Museum of Art Collections



静岡市東海道広重美術館

SHIZUOKA CITY TOKAIDO HIROSHIGE MUSEUM of ART

Second exhibition: **Skills of the Master Craftsman** -Exhibition Highlights-

■ **Carving and Print Techniques that Support Ukiyo-e** ■

Ukiyo-e hanga were created by dividing labor between the *Eshi* (painter), *Horishi* (carver), and *Surishi* (printer). It is not only the skills of the *Eshi* that determine the aesthetics of an Ukiyo-e hanga but also the skills of the *Horishi* and *Surishi*. In this exhibition, you will be able to see various techniques of *Horishi* and *Surishi* that support the creation of Ukiyo-e hanga up-close.

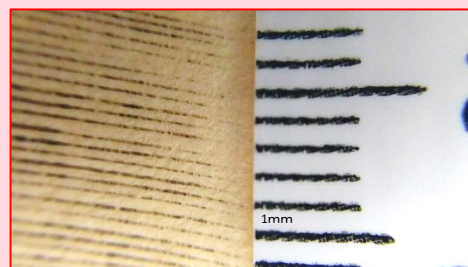
■ **Kewari** ■



Part2: Utagawa Toyokuni III
Fifty-three Stations of the Tōkaidō Road "Goyu: Yamamoto Kansuke"

Zoom

About three hairs are carved
in 1 millimeter !



■ **Shōmen-zuri** ■



Part1: Utagawa Toyokuni III
Fifty-three Stations of the Tōkaidō Road "Okitsu: Jiraiya"

Incline



Pattern appears !

※All Shizuoka City Tokaido Hiroshige Museum of Art Collections



静岡市東海道広重美術館

SHIZUOKA CITY TOKAIDO HIROSHIGE MUSEUM of ART

Event

Gallery Talks by a Museum Curator *Language: Japanese

□Date: February 16 (Sat.), March 17 (Sun.)2019, 13:00 - 13:30

□Admission: Free *museum entrance fee is required Meeting place is the entrance hall of the museum. No pre-registration needed; unlimited enrollment

About of Museum

Shizuoka City Tokaido Hiroshige Museum of Art

Shizuoka City Tokaido Hiroshige Museum of Art is the first art museum in Japan to focus on the works of Edo Ukiyo-e Artist, Utagawa Hiroshige. There are approximately 1400 landscape woodblock prints and other works within the Hiroshige collection, including Hiroshige's masterpieces *Fifty-Three Stations of the Tōkaidō* (Tōkaidō Hoeidō Edition) and *One Hundred Famous Views of Edo*.

We aim to promote a new culture of Ukiyo-e through curated exhibitions connecting Ukiyo-e with contemporary works. Visitors can enjoy the magnificence of internationally loved Ukiyo-e works from Edo to the present.



About Hiroshige

Utagawa Hiroshige (1797 - 1858) Ukiyo-e artist

He became a pupil of Toyohiro Utagawa when he was about 15 years old. His work *Fifty Three Station of the Tōkaidō* (Tōkaidō Hoeidō Edition) caused a great sensation, after that he continued to create Ukiyo-e prints about the Tōkaidō and the landscape of Edo and became famous as landscape artist. While he was working on what is considered his late-life masterpiece, *One Hundred Famous Views of Edo*, Hiroshige fell ill and passed away at the age of 62. Hiroshige's bold composition and lyrical style is loved by all and his works continue to influence artists all over the world.



Utagawa Toyokuni III
Memorial Portrait of Utagawa Hiroshige
Collection of Shizuoka City Tokaido Hiroshige Museum of Art



静岡市東海道広重美術館

SHIZUOKA CITY TOKAIDO HIROSHIGE MUSEUM of ART

Press Images

High-resolution data for the following 6 images are available for editorial coverage of exhibitions. Please send your request by email or fax after reading the usage conditions on the following page.



1



2



3



4



5



6

☐ Titles and Credits

1.	Poster image	©Shizuoka City Tokaido Hiroshige Museum of Art
2.	Utagawa Hiroshige	<i>Sixty-Nine Stations of the Kisokaidō "Nakatsugawa"</i> Collection of Shizuoka City Tokaido Hiroshige Museum of Art
3.	Utagawa Hiroshige	<i>One Hundred Famous Views of Edo "Sudden Shower over Shin-Ōhashi Bridge and Atake"</i> Collection of Shizuoka City Tokaido Hiroshige Museum of Art
4.	Utagawa Hiroshige	<i>Famous Places in the Eastern Capital "Zōjō-ji Temple at Shiba in Snow"</i> Collection of Shizuoka City Tokaido Hiroshige Museum of Art
5.	Utagawa Hiroshige	<i>Sixty-Nine Stations of the Kisokaidō "Seba"</i> Collection of Shizuoka City Tokaido Hiroshige Museum of Art
6.	Utagawa Toyokuni III	<i>Fifty-three Stations of the Tōkaidō Road "Okitsu: Jiraiya"</i> Collection of Shizuoka City Tokaido Hiroshige Museum of Art

〈Usage Conditions〉

- * The images may be used only for editorial press purposes in conjunction with this exhibition and may not be used after the exhibition is over.
- * Images may not be altered (trimmed, combined with other images or text, etc...).
- * Images must be reproduced with notice of attribution.
- * When an image is used, please email us a review copy.
- * Please send a final copy for our records (publication copy, URL, DVD video, CD, etc...).



静岡市東海道広重美術館
SHIZUOKA CITY TOKAIDO HIROSHIGE MUSEUM of ART

The Edo Skies

Second Exhibition: Skills of the Master Craftsman

Press Image Data Request

TO: Tokaido Hiroshige Museum of Art Press Desk

FAX.054-375-5321 E-mail. info@tokaido-hiroshige.jp

■ Check the box for image data to be requested.

- | | | |
|-----------------------------|----------------------|--|
| 1. <input type="checkbox"/> | Poster image | |
| 2. <input type="checkbox"/> | Utagawa Hiroshige | <i>Sixty-Nine Stations of the Kisokaidō "Nakatsugawa"</i> |
| 3. <input type="checkbox"/> | Utagawa Hiroshige | <i>One Hundred Famous Views of Edo "Sudden Shower over Shin-Ōhashi Bridge and Atake"</i> |
| 4. <input type="checkbox"/> | Utagawa Hiroshige | <i>Famous Places in the Eastern Capital "Zōjō-ji Temple at Shiba in Snow"</i> |
| 5. <input type="checkbox"/> | Utagawa Hiroshige | <i>Sixty-Nine Stations of the Kisokaidō "Seba"</i> |
| 6. <input type="checkbox"/> | Utagawa Toyokuni III | <i>Fifty-three Stations of the Tōkaidō Road "Okitsu: Jiraiya"</i> |

Your Company: _____

Publication's Name: _____

Your Name: _____

TEL : _____ FAX : _____

E-mail : _____

When do you need the image by (month / date / time) ? *Can be sent between 10:00 – 16:00 (JST)

Planned publishing date (section title)

* The images may be used only for editorial press purposes in conjunction with this exhibition and may not be used after the exhibition is over.

* Images may not be altered (trimmed, combined with other images or text, etc...).

* Images must be reproduced with notice of attribution.

* When an image is used, please email us a review copy.

* Please send a final copy for our records (publication copy, URL, DVD video, CD, etc...).



静岡市東海道広重美術館

SHIZUOKA CITY TOKAIDO HIROSHIGE MUSEUM of ART

About this museum



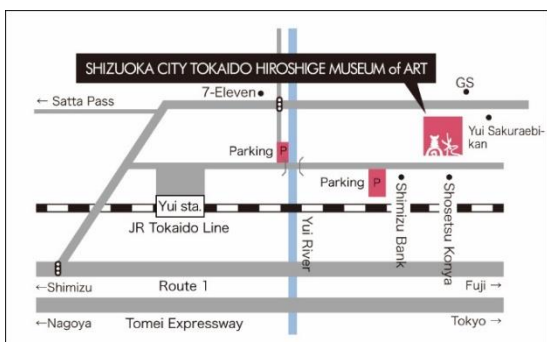
Hours: 9:00 AM – 5:00 PM (last admission 30 minutes before closing time)

Closed: Mondays (if it falls on a holiday, then the following Tuesday)

- Adults: 510 (410) yen
- University / High School Students: 300 (240) yen
- Junior high students and younger: 120 (100) yen

* () indicates prices for groups of 20 or more * Persons with proof of disability and one accompanying person are admitted free of charge

* Shizuoka City residents, junior high students and younger, as well as Shizuoka City residents over 70 are admitted free of charge.



【Access】

Access by train:

Take the JR Tokaido Line and get off at Yui Station.

It is a 25-minute walk or 5-minute taxi ride from there.

Access by car:

There are 21 parking spaces at the museum (Yui Honjin Park Parking)

■ From Osaka, Nagoya area

Exit the Tomei Expressway at the Shimizu IC and it is 20-minutes by Route 1 from there.

■ From Tokyo, Yokohama area

Exit the Tomei Expressway at the Fuji IC and it is 25-minutes by Route 1 from there.

For more information on this exhibition and press inquiries

Tel: 054-375-4454

Fax: 054-375-5321

Mail: info@tokaido-hiroshige.jp

Shizuoka City Tokaido Hiroshige Museum of Art

297-1 Yui, Shimizu-ku Shizuoka City 421-3103

[URL] www.tokaido-hiroshige.jp

[facebook] www.facebook.com/tokaido.hiroshige



静岡市東海道広重美術館

SHIZUOKA CITY TOKAIDO HIROSHIGE MUSEUM of ART