



Tokyo Story/After Hiroshige

2013 November 19 (Tue.) – 2014 February 2 (Sun.)

Part 1 / 2013 November 19 (Tue.) – 2013 December 23 (Mon./Holiday)

Part 2 / 2013 December 25 (Wed.) – 2014 February 2 (Sun.)

***Tokyo Story/After Hiroshige***

2013 November 19 (Tue.) — 2014 February 2 (Sun.)

Part 1 / 2013 November 19 (Tue.) — 2013 December 23 (Mon./Holiday)

Part 2 / 2013 December 25 (Wed.) — 2014 February 2 (Sun.)

*The museum will be closed for the new year holiday from Dec. 28 (Sat.) to Jan. 4 (Sat.).

Organizer: Shizuoka Tokaido Hiroshige Museum of Art

Designated Manager: NPO Hexaproject

Cooperation: The Adachi Foundation for the Preservation of Woodcut Printing



JAPAN AIRLINES

Hiroshige was active during an extremely interesting period of history when Japan's doors were opening up to the West after being closed off from the rest of the world. His work *One Hundred Famous Views of Edo* captures the city of Edo, located at the pivotal point between revolution brought on by a Western threat and a traditional Japan. Woodblock printing indirectly expressed the rapid changes taking place and the resulting pressures on environmental and cultural heritage. This period also marked in increased interest in traveling around Japan amongst the populace.

This exhibition, *Tokyo Story/After Hiroshige*, is the culmination of Allchurch's long-standing interest in Ukiyo-e and pays homage to the landscape master Utagawa Hiroshige (1797-1858) and his last great work the *One Hundred Famous Views of Edo* (1856-58). Allchurch visited the actual spots in *One Hundred Famous Views of Edo* and uses these backdrops as a motif to create present-day versions. Just as Hiroshige's *One Hundred Famous Views of Edo* captured a decisive moment in Japanese history, Allchurch's *Tokyo Story* personifies the soul of the modern day city.

Also presented are two new works by Allchurch, *Yui* and *Mariko*, based on Hiroshige's *Fifty-Three Stations of the Tokaido* and made after a visit to Shizuoka City in April 2013.

©Artwork

*Changes may be made to the exhibit and its displayed works.

Utagawa Hiroshige Total : 117 pieces

Part.1 : *One Hundred Famous Views of Edo* [58 pieces; inc. catalog]Part.2 : *One Hundred Famous Views of Edo* [59pieces]

The works in *One Hundred Famous Views of Edo* (120 in total) will be exhibited in two parts according to the table contents order, except for the works “Gotenyama Hills in Shinagawa”, “Suijin Shrine and Matsusaki on the Sumidagawa River” and “Distant View of Kinryuzan Temple and Azumabashi Bridge” which can not be displayed due to exhibition cycle restrictions.

Emily Allchurch Total : 10 pieces

Part 1 / Part 2 : *Tokyo Story /After Hiroshige* [10 pieces]

■ Utagawa Hiroshige

One Hundred Famous Views of Edo

One Hundred Famous Views of Edo by the Master Landscape Artist Utagawa Hiroshige was a masterwork made in the artist's last years and is noted for the frequent use of extremely enlarged foreground objects to create depth. Published in succession from 1856, 100 pieces were planned just as the title suggests. But it proved so popular that all 100 were made within a year of it first being released so more were published afterwards. There are 118 pieces in existence which bears Hiroshige's name and is the largest number of works made by a single artist in a Ukiyo-e series. In total there are 120 works including the piece "Paulownia Trees at Akasaka in the Evening Rain" by Utagawa Hiroshige II and the table of contents designed by Baisotei Gengyo.

[Part1]



Nihonbashi Bridge and Edobashi Bridge



Dawn at the Kanda Myojin Shrine



Yatsumi Bridge

[Part2]



Kinryuzan Temple in Asakusa



Horikiri Iris Garden



Moon-Viewing Point

■ Emily Allchurch

Tokyo Story / After Hiroshige

Tokyo Story/After Hiroshige is the culmination of Allchurch's long-standing interest in Ukiyo-e and pays homage to the master printmaker Utagawa Hiroshige (1797-1858) and his last great work the One Hundred Famous Views of Edo. She visited the same spots taking photos which she then created modern versions. Her works possess a mysterious quality which transports the viewer into a magical world. All 10 works from the Tokyo Story series will be on display in this exhibition.

Tokyo Story / After Hiroshige



Tokyo Story 2 :
Bridge (after Hiroshige) / 2011



Tokyo Story 6 :
Shrine (after Hiroshige) / 2011



Tokyo Story 10 :
Willow Landscape (after Hiroshige) / 2011



Tokyo Story 8 :
Temple (after Hiroshige) / 2011



Tokyo Story 1 :
Lotus Garden (after Hiroshige) / 2011



Tokyo Story 4 :
Interior (after Hiroshige) / 2011



Tokaido Road “Yui”, “Mariko”

Also presented are two new works by Allchurch, *Yui* and *Mariko*, based on Hiroshige's *Fifty-Three Stations of the Tokaido* and made after a visit to Shizuoka City in April 2013.



Emily Allchurch : *Tokaido Road - Yui (after Hiroshige)* / 2013



Emily Allchurch : *Tokaido Road - Mariko (after Hiroshige)* / 2013



Fifty-Three Stations of the Tokaido (Hoeido Version)
“Yui (Satta Pass)”

Original piece from our collection which this new work is based.



Fifty-Three Stations of the Tokaido (Hoeido Version)
“Mariko (The Famous Teahouse)”

Original piece from our collection which this new work is based.

■ Artist Profile



Emily Allchurch

Emily Allchurch creates complex photographic images that closely reference old master paintings and prints. Each of her images is composed from numerous photographs, carefully blended using digital software, to produce a seamless re-creation of the original, set in a contemporary idiom. In 2012 she was commissioned to create work for the Diamond Jubilee Pageant. She is active both within the UK and internationally as an artist and an arts educator conducting workshops for places such as Tate Modern.

Born: Jersey, Channel Islands 1974

Education: Royal College of Art, London. MA Sculpture. 1997-1999

Kent Institute of Art & Design BA (Hons) Fine Art. First class. 1993-1996

U.W.E Bristol. Foundation Art & Design. 1992-1993

Website: <http://www.emilyallchurch.com/>

■ Related Event

Curator Gallery Talk

“One Hundred Famous Views of Edo”

When: 2014 January 12 (Sun.) 13:00 - 13:30

Cost: Free *museum entrance fee is required

Language: Japanese

Meeting place is the entrance hall of the museum.

No pre-registration needed; unlimited enrollment.

Hours : 9:00 AM – 5:00 PM (last admission 30 minutes before closing time)

Closed : Mondays (if it falls on a holiday, then the following Tuesday)

Admission : Adults: 500 (400) yen / University/High School Students: 300 (240) yen

*Junior high students and younger as well as Shizuoka City residents over 70 are admitted free of charge

* () indicates prices for groups of 20 or more

* Persons with proof of disability and one accompanying person are admitted free of charge

Organizer : Shizuoka Tokaido Hiroshige Museum of Art (Designated Manager: NPO Hexaproject)

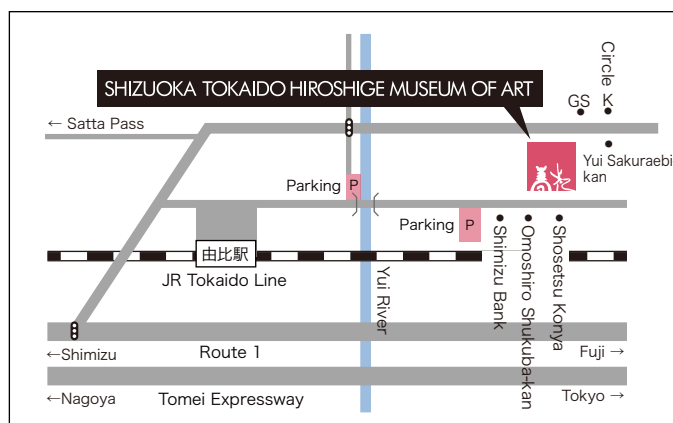
Cooperation : The Adachi Foundation for the Preservation of Woodcut Printing



297-1 Yui, Shimizu-ku
Shizuoka City 421-3103
Tel 054-375-4454 / Fax 054-375-5321
[URL] www.tokaido-hiroshige.jp
[facebook] www.facebook.com/tokaido.hiroshige

□ Access by train:
Take the JR Tokaido Line and get off at Yui Station.
It is a 25-minute walk or 5-minute taxi ride from there.

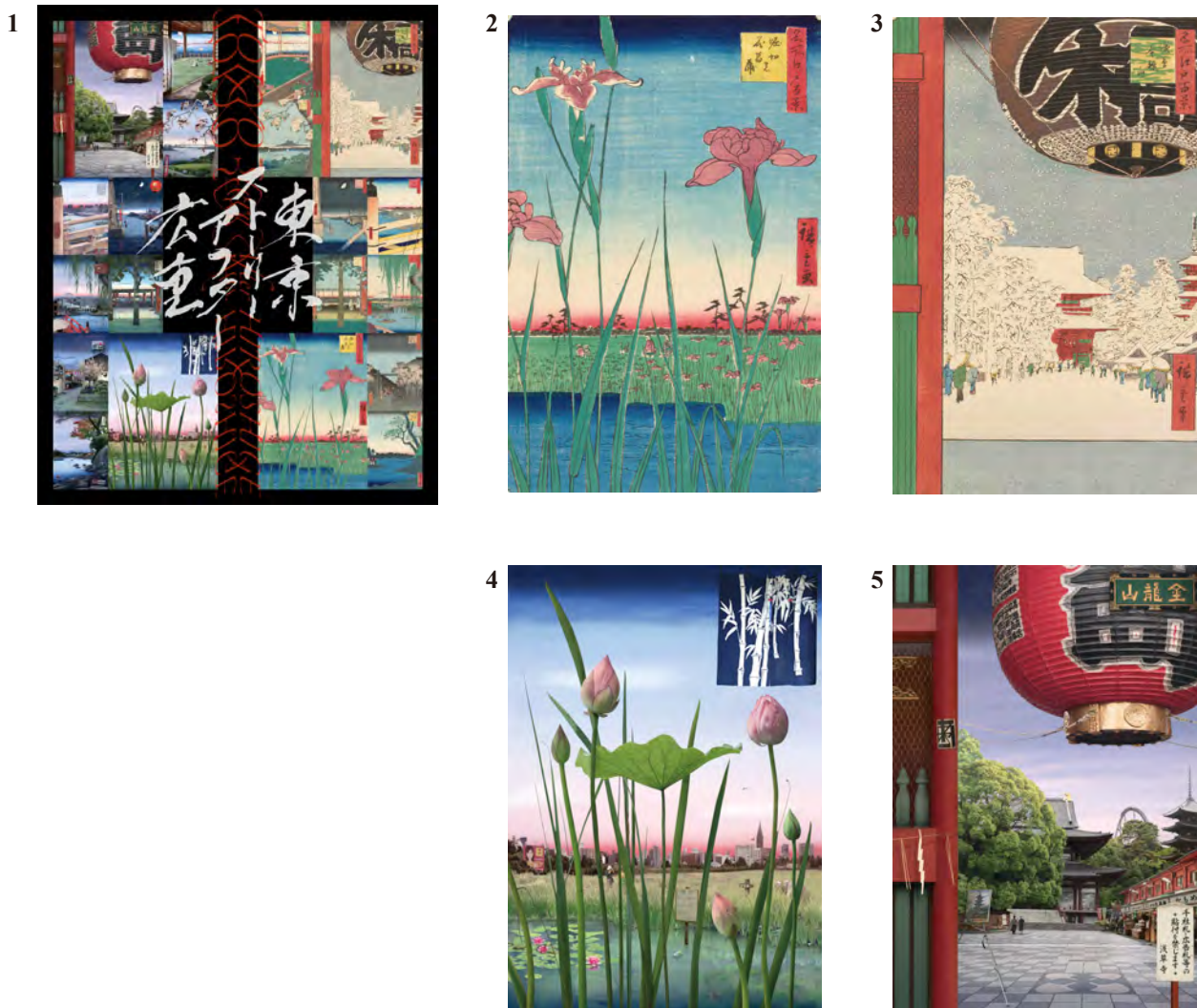
□ Access by car:
Exit the Tomei Expressway at the Shimizu IC and it is 20-minutes
by Route 1 from there. There are 21 parking spaces at the museum
(Yui Honjin Park Parking).



For more information on this exhibition and press inquiries
pr@tokaido-hiroshige.jp

Press Images

High-resolution data for the following 5 images are available for editorial coverage of exhibitions. Please send your request by email or fax after reading the usage conditions on the following page.



Title and Credit

1. Poster image
2. Utagawa Hiroshige “One Hundred Famous Views of Edo / Horikiri Iris Garden”
3. Utagawa Hiroshige “One Hundred Famous Views of Edo / Kinryuzan Temple in Asakusa”
4. Emily Allchurch “Tokyo Story 1: Lotus Garden (after Hiroshige)”
5. Emily Allchurch “Tokyo Story 8: Temple (after Hiroshige)”

Usage Conditions

- * The images may be used only for editorial press purposes in conjunction with this exhibition and may not be used after the exhibition is over.
- * Images may not be altered (trimmed, combined with other images or text, etc...).
- * Images must be reproduced with notice of attribution.
- * When an image is used, please email us a review copy.
- * Please send a final copy for our records (publication copy, URL, DVD video, CD, etc...)

Please send us information if you introduce our program.

pr@tokaido-hiroshige.jp



Tokyo Story/After Hiroshige

Press Image Data Request

TO: Tokaido Hiroshige Museum of Art Press Desk

Fax. 054-375-5321 E-mail. pr@tokado-hiroshige.jp

Check the box for image data to be requested.

- ☐ 1. Poster image
- ☐ 2. Utagawa Hiroshige *One Hundred Famous Views of Edo / Horikiri Iris Garden*
- ☐ 3. Utagawa Hiroshige *One Hundred Famous Views of Edo / Kinryuzan Temple in Asakusa*
- ☐ 4. Emily Allchurch *Tokyo Story 1: Lotus Garden (after Hiroshige)*
- ☐ 5. Emily Allchurch *Tokyo Story 8: Temple (after Hiroshige)*

Your Company:

Publication's Name:

Your Name:

TEL :

FAX :

E-mail :

When do you need the image by (month/date/time)?

*Can be sent between 10:00-16:00 (JST)

Planned publishing date (section title)

Usage Conditions

* The images may be used only for editorial press purposes in conjunction with this exhibition and may not be used after the exhibition is over.

* Images may not be altered (trimmed, combined with other images or text, etc...).

* Images must be reproduced with notice of attribution.

* When an image is used, please email us a review copy.

* Please send a final copy for our records (publication copy, URL, DVD video, CD, etc...)

Please send us information if you introduce our program.

pr@tokaido-hiroshige.jp