



# Hiroshige: The First and Last Tōkaidō

## Secondary Exhibition: Following the Trail of the Tōkaidō with a Map

2016 September 13 (Tue.) - November 20 (Sun.)

Part 1 / September 13 (Tue.) - October 16 (Sun.)

Part 2 / October 18 (Tue.) - November 20 (Sun.)

Organizer: Shizuoka City Tokaido Hiroshige Museum of Art

Designated Manager: NPO Hexaproject

Cooperation: The Adachi Foundation for the Preservation of Woodcut Printing

### Outline

Utagawa Hiroshige, known as an artist of famous places, produced numerous *soroimono* (series of prints published with the same title) based on the Tōkaidō. His work is critically acclaimed worldwide and is known for lyrical pieces that incorporate changes in the four seasons and weather to match the various scenery of the highway, without focusing simply on beautiful scenery.

This exhibition will introduce *Fifty-three Stations of the Tōkaidō* (Tōkaidō Hoeidō Edition), which was the first and most popular of the Tōkaidō series that Hiroshige depicted and the *Famous Sights of the Fifty-three Stations* (Vertical Tōkaidō), which was the last Tōkaidō work published three years before his death. We will follow the changes in style of Hiroshige's scenery with the two series that were published approximately twenty years apart.

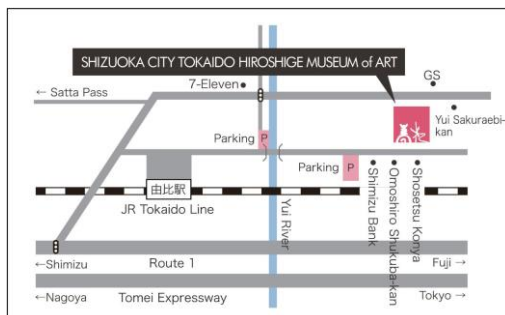
Hours 9:00 AM – 5:00 PM (last admission 30 minutes before closing time)

Closed Mondays (if it falls on a holiday, then the following Tuesday)

Adults: 510 (410) yen / University / High School Students: 300 (240) yen / Junior high students and younger: 120 (100) yen

\* ( ) indicates prices for groups of 20 or more \* Persons with proof of disability and one accompanying person are admitted free of charge

\* Shizuoka City residents, junior high students and younger, as well as Shizuoka City residents over 70 are admitted free of charge.



#### Access by train:

Take the JR Tokaido Line and get off at Yui Station.  
It is a 25-minute walk or 5-minute taxi ride from there.

#### Access by car:

There are 21 parking spaces at the museum  
(Yui Honjin Park Parking)

#### ■From Osaka, Nagoya area

Exit the Tomei Expressway at the Shimizu IC and it is 20-minutes by Route 1 from there.

#### ■From Tokyo, Yokohama area

Exit the Tomei Expressway at the Fuji IC and it is 25-minutes by Route 1 from there.

#### For more information on this exhibition and press inquiries

Tel 054-375-4454 / Fax 054-375-5321 info@tokaido-hiroshige.jp

Shizuoka City Tokaido Hiroshige Museum of Art

297-1 Yui, Shimizu-ku Shizuoka City 421-3103

[URL] [www.tokaido-hiroshige.jp](http://www.tokaido-hiroshige.jp) [facebook] [www.facebook.com/tokaido.hiroshige](https://www.facebook.com/tokaido.hiroshige)

## Exhibition Highlights

### ① Notice the difference! Hiroshige's Tōkaidō

Pay attention to Hiroshige's growth as an artist plus the brushwork and composition change as only these two series can provide: *Fifty-three Stations of the Tōkaidō* (Tōkaidō Hoeidō Edition) that was published in his beginning days as an artist of famous places, and *Famous Sights of the Fifty-three Stations* (Vertical Tōkaidō) draw when he was a veteran painter.



Work exhibited in Part 1.

Utagawa Hiroshige

*Fifty-three Stations of the Tōkaidō "Yui: Satta Pass"*

Collection of Shizuoka City Tokaido Hiroshige Museum of Art



Work exhibited in Part 2.

Utagawa Hiroshige

*Famous Sights of the Fifty-three Stations "Yui: The Frightful Satta Pass"*

Collection of Shizuoka City Tokaido Hiroshige Museum of Art

### ② On Display Only Once a Year

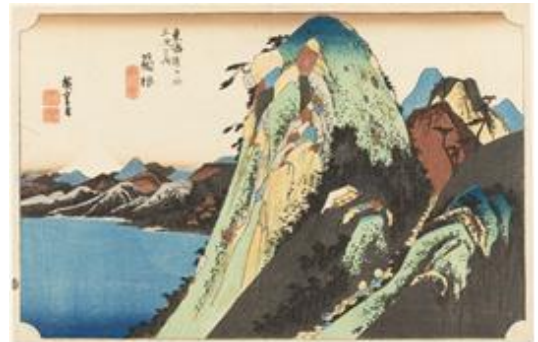
*Fifty-three Stations of the Tōkaidō* (Tōkaidō Hoeidō Edition) was the first of Hiroshige's Tōkaidō series as well as his masterpiece possessing deep-rooted popularity even today. But for preservation reasons it can only be shown for about one month a year. The chance to enjoy Hiroshige's world in this valuable exhibition presenting all the works in the *Fifty-three Stations of the Tōkaidō* series is not to be missed.

Work exhibited in Part 1.

Utagawa Hiroshige

*Fifty-three Stations of the Tōkaidō "Hakone: View of the Lake"*

Collection of Shizuoka City Tokaido Hiroshige Museum of Art



#### Related Event 1: Ukiyo-e Demonstrations & Workshops

Demonstrations and workshops by The Adachi Foundation for the Preservation of Woodcut Printing who continue the Edo-period techniques of woodcut printing. All ages are welcome to participate.

□Presenter: The Adachi Foundation for the Preservation of Woodcut Printing

□When: October 16 (Sun.); Morning / 11:00 - 12:30, Afternoon / 14:00 - 15:30

□Cost: Free \*museum entrance fee is required

□Registration: Applications accepted by telephone (054-375-4454) or through our website.

Printing workshop spaces are limited to the first 15 people (pre-registration recommended). Registration will close once all spaces are filled.

#### Related Event 2: Gallery Talks by a Museum Curator

□Date: September 25 (Sun.), October 30 (Sun.) 13:00 - 13:30

□Cost: Free \*museum entrance fee is required

Language: Japanese Meeting place is the entrance hall of the museum. No pre-registration needed; unlimited enrollment



## Artworks

### Part 1 *Fifty-three Stations of the Tōkaidō (Tōkaidō Hoeidō Edition); 55 works*

This *Soroimono* (series of prints) are reputable works by Hiroshige that represent Ukiyo-e. Taking the name from the original publisher Hoeidō, they are widely known as the Tōkaidō Hoeidō Edition.



Work exhibited in Part 1.  
Utagawa Hiroshige  
*Fifty-Three Stations of the Tōkaidō "Numazu: Twilight"*  
Collection of Shizuoka City Tokaido Hiroshige Museum of Art



Work exhibited in Part 1.  
Utagawa Hiroshige  
*Fifty-Three Stations of the Tōkaidō "Hara: Mount Fuji in the Morning"*  
Collection of Shizuoka City Tokaido Hiroshige Museum of Art

### Part 2 *Famous Sights of the Fifty-three Stations (Vertical Tōkaidō); 55 works*

Its vertical orientation has led to the nickname "Vertical Tōkaidō". There are many dynamic compositions looking down diagonally from above in this, the last Tōkaidō series that Hiroshige created.



Work exhibited in Part 2.  
Utagawa Hiroshige  
*Famous Sights of the Fifty-three Stations "Yoshiwara: Mt. Fuji on the Left"*  
Collection of Shizuoka City Tokaido Hiroshige Museum of Art

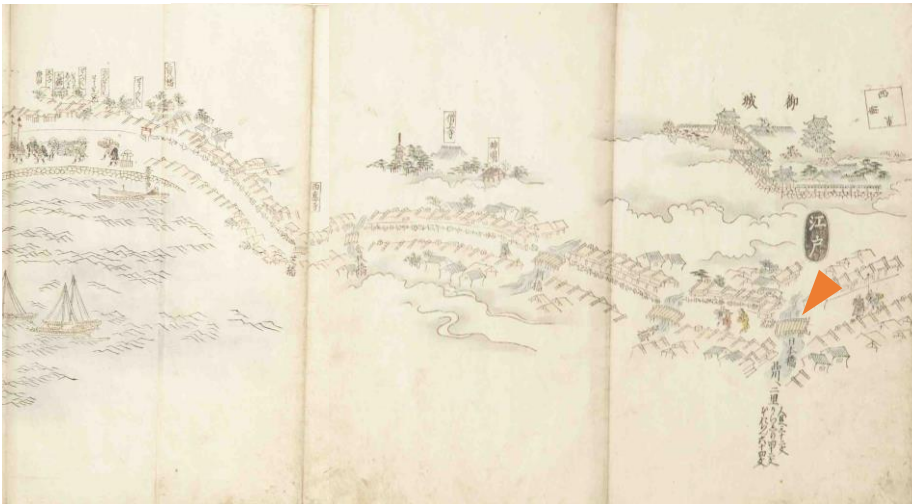


Work exhibited in Part 2.  
Utagawa Hiroshige  
*Famous Sights of the Fifty-three Stations "Narumi: Famous Arimatsu Dyed Cloth"*  
Collection of Shizuoka City Tokaido Hiroshige Museum of Art

## Secondary Exhibition: Following the Trail of the Tōkaidō with a Map

This feature exhibition will introduce the path from Edo to Shizuoka City (two passes and six stations) from *A Measured Pictorial Map of the Tōkaidō* that was depicted as a detailed pictorial map of the Tōkaidō highway from Edo to Kyoto, and exhibit the *Scenes of Famous Places along the Tōkaidō Road* (Processional Tōkaidō) that depicted locations and buildings that appear in the picture.

### Introduction of map locations and their Ukiyo-e depiction.



Work exhibited in Part 1.

“A Measured Pictorial Map of the Tōkaidō Vol. 1”

Collection of Shizuoka City Tokaido Hiroshige Museum of Art

### Nihonbashi



Work exhibited in Part 1.

Utagawa Toyokuni III

*Scenes of Famous Places along the Tōkaidō Road* “Nihonbashi”

Collection of Shizuoka City Tokaido Hiroshige Museum of Art

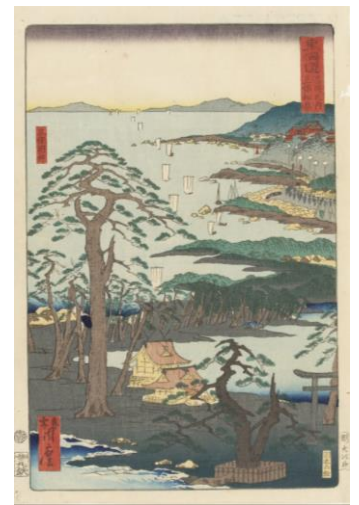


Work exhibited in Part 2.

“A Measured Pictorial Map of the Tōkaidō Vol. 2”

Collection of Shizuoka City Tokaido Hiroshige Museum of Art

### Miho-no-Matsubara



Work exhibited in Part 2.

Seisei Chikamaro (Kawanabe Kyōsai)

*Scenes of Famous Places along the Tōkaidō Road* “Miho-no-Matsubara”

Collection of Shizuoka City Tokaido Hiroshige Museum of Art





## About of Museum

### Shizuoka City Tokaido Hiroshige Museum of Art

Shizuoka City Tokaido Hiroshige Museum of Art is the first art museum in Japan to focus on the works of Edo Ukiyo-e Artist, Utagawa Hiroshige. There are approximately 1400 landscape woodblock prints and other works within the Hiroshige collection, including Hiroshige's masterpieces *Fifty-Three Stations of the Tōkaidō* (Tōkaidō Hoeidō Edition) and *One Hundred Famous Views of Edo*. We aim to promote a new culture of Ukiyo-e through curated exhibitions connecting Ukiyo-e with contemporary works. Visitors can enjoy the magnificence of internationally loved Ukiyo-e works from Edo to the present.



### About Hiroshige

Utagawa Hiroshige (1797 - 1858) Ukiyo-e artist

He became a pupil of Toyohiro Utagawa when he was about 15 years old. His work *Fifty Three Station of the Tōkaidō* (Tōkaidō Hoeidō Edition) caused a great sensation, after that he continued to create Ukiyo-e prints about the Tōkaidō and the landscape of Edo and became famous as landscape artist. While he was working on what is considered his late-life masterpiece, *One Hundred Famous Views of Edo*, Hiroshige fell ill and passed away at the age of 62. Hiroshige's bold composition and lyrical style is loved by all and his works continue to influence artists all over the world.

Utagawa Toyokuni III Memorial Portrait of Utagawa Hiroshige  
Collection of Shizuoka City Tokaido Hiroshige Museum of Art



## Press Images

High-resolution data for the following 5 images are available for editorial coverage of exhibitions. Please send your request by email or fax after reading the usage conditions on the following page.



1



2



3



4



5

#### □ Titles and Credits

- |                      |   |
|----------------------|---|
| 1. Poster image      | ©Shizuoka City Tokaido Hiroshige Museum of Art  |
| 2. Utagawa Hiroshige | <i>Fifty-Three Stations of the Tōkaidō</i> "Yui: Satta Pass" Collection of Shizuoka City Tokaido Hiroshige Museum of Art                                |
| 3. Utagawa Hiroshige | <i>Fifty-Three Stations of the Tōkaidō</i> "Hakone: The Lake" Collection of Shizuoka City Tokaido Hiroshige Museum of Art                               |
| 4. Utagawa Hiroshige | <i>Famous Sights of the Fifty-three Stations</i> "Yui: The Frightful Satta Pass" Collection of Shizuoka City Tokaido Hiroshige Museum of Art            |
| 5. Seisei Chikamaro  | <i>Scenes of Famous Places along the Tōkaidō Road</i> "Miho-no-Matsubara" Collection of Shizuoka City Tokaido Hiroshige Museum of Art (Kawanabe Kyōsai) |

#### 〈Usage Conditions〉

- \* The images may be used only for editorial press purposes in conjunction with this exhibition and may not be used after the exhibition is over.
- \* Images may not be altered (trimmed, combined with other images or text, etc...).
- \* Images must be reproduced with notice of attribution.
- \* When an image is used, please email us a review copy
- \* Please send a final copy for our records (publication copy, URL, DVD video, CD, etc...)



# Hiroshige: The First and Last Tōkaidō

## Secondary Exhibition: Following the Trail of the Tōkaidō with a Map

### Press Image Data Request

TO: Tokaido Hiroshige Museum of Art Press Desk

Fax. 054-375-5321 E-mail. info@tokaido-hiroshige.jp

■ Check the box for image data to be requested.

1. ☐ Poster image
2. ☐ Utagawa Hiroshige / *Fifty-Three Stations of the Tōkaidō* "Yui: Satta Pass"
3. ☐ Utagawa Hiroshige / *Fifty-Three Stations of the Tōkaidō* "Hakone: The Lake"
4. ☐ Utagawa Hiroshige / *Famous Sights of the Fifty-three Stations* "Yui: The Frightful Satta Pass"
5. ☐ Seisei Chikamaro / *Scenes of Famous Places along the Tōkaidō Road* "Miho-no-Matsubara"

Your Company:

Publication's Name:

Your Name:

TEL :

FAX :

E-mail :

When do you need the image by (month / date / time) ?

\*Can be sent between 10:00 – 16:00 (JST)

Planned publishing date (section title)

#### 〈Usage Conditions〉

- \* The images may be used only for editorial press purposes in conjunction with this exhibition and may not be used after the exhibition is over.
- \* Images may not be altered (trimmed, combined with other images or text, etc...).
- \* Images must be reproduced with notice of attribution.
- \* When an image is used, please email us a review copy
- \* Please send a final copy for our records (publication copy, URL, DVD video, CD, etc...)

Please send us information if you introduce our program.

Tel 054-375-4454 / Fax 054-375-5321 info@tokaido-hiroshige.jp