



Totally Fuji

Secondary Exhibition: Charles Emerson "Fuji"

2016 November 22 (Tue.) - 2017 January 29 (Sun.)

Part 1: November 22 (Tue.) - December 25 (Sun.)

Part 2: December 27 (Tue.) - January 29 (Sun.)

The museum will be closed for the new year holiday from Dec. 28 (Wed.) to Jan. 4 (Wed.)

Organizer: Shizuoka City Tokaido Hiroshige Museum of Art

Designated Manager: NPO Hexaproject

Cooperation: Antlers Gallery

Support from The Daiwa Anglo-Japanese Foundation, The Great Britain Sasakawa Foundation

Outline

The beautiful and grand Mount Fuji has always been a symbol of worship as the mountain of god. Mount Fuji has fascinated many with its high altitude and symmetry of the foot of the mountain, and it has been expressed in many paintings and sculptures. This exhibition features the Ukiyoe-Hanga series including the *Thirty-six Views of Mount Fuji* (Horizontal) and the *Thirty-six Views of Mount Fuji* (Vertical) depicted by *Eshi* of the Edo period, Utagawa Hiroshige, and puts focus on the people of the Edo period. We have also exhibited a magical Mount Fuji captured using multiple exposure by British photographer, Charles Emerson.

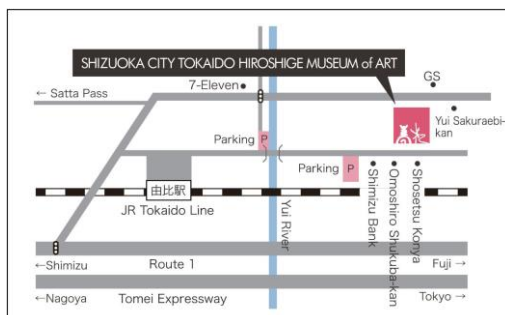
Hours 9:00 AM – 5:00 PM (last admission 30 minutes before closing time)

Closed Mondays (if it falls on a holiday, then the following Tuesday)

Adults: 510 (410) yen / University / High School Students: 300 (240) yen / Junior high students and younger: 120 (100) yen

* () indicates prices for groups of 20 or more * Persons with proof of disability and one accompanying person are admitted free of charge

* Shizuoka City residents, junior high students and younger, as well as Shizuoka City residents over 70 are admitted free of charge.



Access by train:

Take the JR Tokaido Line and get off at Yui Station.
It is a 25-minute walk or 5-minute taxi ride from there.

Access by car:

There are 21 parking spaces at the museum
(Yui Honjin Park Parking)

■From Osaka, Nagoya area

Exit the Tomei Expressway at the Shimizu IC and it is 20-minutes by Route 1 from there.

■From Tokyo, Yokohama area

Exit the Tomei Expressway at the Fuji IC and it is 25-minutes by Route 1 from there.

For more information on this exhibition and press inquiries

Tel 054-375-4454 / Fax 054-375-5321 info@tokaido-hiroshige.jp

Shizuoka City Tokaido Hiroshige Museum of Art

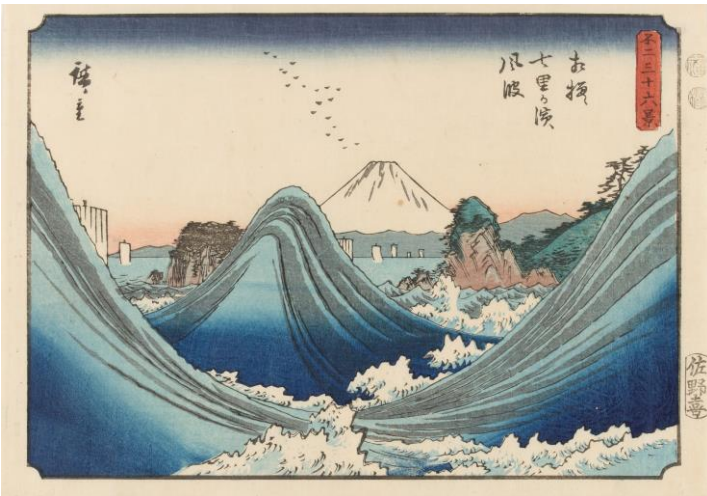
297-1 Yui, Shimizu-ku Shizuoka City 421-3103

[URL] www.tokaido-hiroshige.jp [facebook] www.facebook.com/tokaido.hiroshige

Exhibition Highlights

Fabulous View Points of Mount Fuji

Utagawa Hiroshige, an *Eshi* known for many scenery prints, has depicted Mount Fuji in scenes such as Tōkaidō and Edo; however, he has always based his prints on actual images so the viewer can immediately realize the angle from where the scene was captured. Please enjoy beautiful Mount Fuji depicted from various angles as if you were a local of the Edo era.



Work exhibited in Part 2.

Utagawa Hiroshige

Thirty-six Views of Mount Fuji "Rough Seas off Shichirigahama Beach in Sagami Province"
Collection of Shizuoka City Tokaido Hiroshige Museum of Art



Work exhibited in Part 1.

Utagawa Hiroshige

Thirty-six Views of Mount Fuji "Ōtsuki Plain in Kai Province"
Collection of Shizuoka City Tokaido Hiroshige Museum of Art

Related Event 1: Charles Emerson: Artist Talk (with Japanese/English interpretation)

☐ Date: November 23 (Wed./Holiday) 13:00 - 13:40

☐ Cost: Free *museum entrance fee is required

Meeting place is the entrance hall of the museum. No pre-registration needed; unlimited enrollment

Related Event 2: Gallery Talks by a Museum Curator

☐ Date: December 4 (Sun.), January 8 (Sun.) 13:00 - 13:30

☐ Cost: Free *museum entrance fee is required

Language: Japanese

Meeting place is the entrance hall of the museum. No pre-registration needed; unlimited enrollment

Artworks

Thirty-six Views of Mount Fuji (Horizontal)

Thirty Six Views of Mount Fuji (Horizontal) were published around 1852 by Sanoya Kihei and the first he made in his *Thirty Six Views of Mount Fuji* series. The size is horizontal *chūban*, exactly half the size of *Thirty Six Views of Mount Fuji* (Vertical). In the works “Under Ryōgokubashi Bridge” and “Tagonoura Bay in Suruga Province”, Hiroshige uses the *Kinkei-kakudai Kōzu* composition which is rare in his horizontal works, making them important works in tracing his change of style in his later years.



Work exhibited in Part 1.

Utagawa Hiroshige

Thirty-six Views of Mount Fuji “The Seashore in Izu Province”

Collection of Shizuoka City Tokaido Hiroshige Museum of Art



Work exhibited in Part 2.

Utagawa Hiroshige

Thirty-six Views of Mount Fuji “Fuji Marsh in Suruga Province”

Collection of Shizuoka City Tokaido Hiroshige Museum of Art

Thirty-six Views of Mount Fuji (Vertical)

The vertical *ōban* nishiki-e works of *Thirty Six Views of Mount Fuji* were made in 1858, the year Hiroshige passed away, and published by Tsutaya Kichizō the following year. These innovative compositional works make use of the paper’s vertical structure by using an overhead view to create depth and perspective as well as using *Kinkei-kakudai Kōzu* by enlarging objects in the foreground.



Work exhibited in Part 1.

Utagawa Hiroshige

Thirty-six Views of Mount Fuji “The Pine Forest of Miho in Suruga Province”

Collection of Shizuoka City Tokaido Hiroshige Museum of Art



Work exhibited in Part 2.

Utagawa Hiroshige

Thirty-six Views of Mount Fuji “The Sea off Satta in Suruga Province”

Collection of Shizuoka City Tokaido Hiroshige Museum of Art

Secondary Exhibition: Charles Emerson “Fuji”

This exhibition will introduce Mount Fuji today captured by British photographer, Charles Emerson. Emerson uses a technique called multiple exposure, which layers multiple images in one screen to create a magical piece. This beautiful work combines Mount Fuji captured from various angles with the people who live alongside Mount Fuji.



Charles Emerson
“MT. FUJI – NORTH EAST SOUTH WEST.”
(c) 2016 Antlers communication



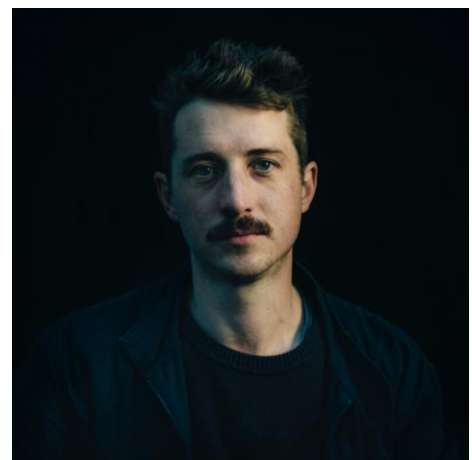
Charles Emerson
“MT. FUJI. 06:30 12:20 18:20 23:10”
(c) 2016 Antlers communication

Secondary Exhibition: Charles Emerson “Fuji”

Born in Devon in 1982, Emerson earned a Photography BA (Hons) at Falmouth College of Art. He currently lives and works in Bristol, UK.

In 2013, Editors used Emerson’s Flower works for their album and single artwork for the record The Weight of Your Love. This helped garner further exposure and interest in his work internationally.

Time, Mondial, Intelligent Life and Wired Magazine have all recently featured Emerson’s mountain works.





About of Museum

Shizuoka City Tokaido Hiroshige Museum of Art

Shizuoka City Tokaido Hiroshige Museum of Art is the first art museum in Japan to focus on the works of Edo Ukiyo-e Artist, Utagawa Hiroshige. There are approximately 1400 landscape woodblock prints and other works within the Hiroshige collection, including Hiroshige's masterpieces *Fifty-Three Stations of the Tōkaidō* (Tōkaidō Hoeidō Edition) and *One Hundred Famous Views of Edo*.

We aim to promote a new culture of Ukiyo-e through curated exhibitions connecting Ukiyo-e with contemporary works. Visitors can enjoy the magnificence of internationally loved Ukiyo-e works from Edo to the present.

About Hiroshige

Utagawa Hiroshige (1797 - 1858) Ukiyo-e artist

He became a pupil of Toyohiro Utagawa when he was about 15 years old. His work *Fifty Three Station of the Tōkaidō* (Tōkaidō Hoeidō Edition) caused a great sensation, after that he continued to create Ukiyo-e prints about the Tōkaidō and the landscape of Edo and became famous as landscape artist. While he was working on what is considered his late-life masterpiece, *One Hundred Famous Views of Edo*, Hiroshige fell ill and passed away at the age of 62. Hiroshige's bold composition and lyrical style is loved by all and his works continue to influence artists all over the world.

Utagawa Toyokuni III Memorial Portrait of Utagawa Hiroshige
Collection of Shizuoka City Tokaido Hiroshige Museum of Art

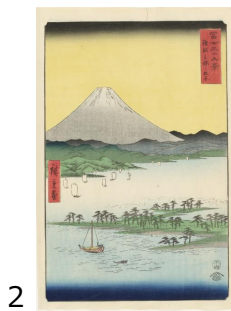


Press Images

High-resolution data for the following 7 images are available for editorial coverage of exhibitions. Please send your request by email or fax after reading the usage conditions on the following page.



1



2



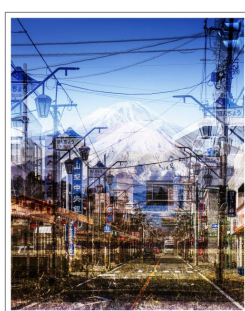
3



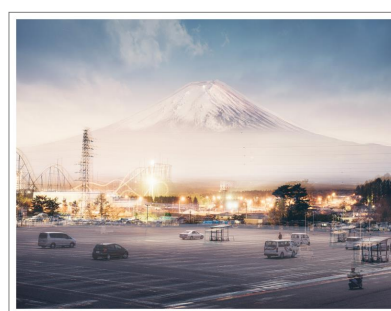
4



5



6



7

□Titles and Credits

- | | | |
|----|-------------------|--|
| 1. | Poster image | ©Shizuoka City Tokaido Hiroshige Museum of Art |
| 2. | Utagawa Hiroshige | <i>Thirty-six Views of Mount Fuji</i> "The Pine Forest of Miho in Suruga Province" Collection of Shizuoka City Tokaido Hiroshige Museum of Art |
| 3. | Utagawa Hiroshige | <i>Thirty-six Views of Mount Fuji</i> "The Sea off Satta in Suruga Province" Collection of Shizuoka City Tokaido Hiroshige Museum of Art |
| 4. | Utagawa Hiroshige | <i>Thirty-six Views of Mount Fuji</i> "The Seashore in Izu Province" Collection of Shizuoka City Tokaido Hiroshige Museum of Art |
| 5. | Utagawa Hiroshige | <i>Thirty-six Views of Mount Fuji</i> "Fuji Marsh in Suruga Province" Collection of Shizuoka City Tokaido Hiroshige Museum of Art |
| 6. | Charles Emerson | "MT. FUJI. 06:30 12:20 18:20 23:10" (c) 2016 Antlers communication |
| 7. | Charles Emerson | |

〈Usage Conditions〉

- * The images may be used only for editorial press purposes in conjunction with this exhibition and may not be used after the exhibition is over.
- * Images may not be altered (trimmed, combined with other images or text, etc...).
- * Images must be reproduced with notice of attribution.
- * When an image is used, please email us a review copy
- * Please send a final copy for our records (publication copy, URL, DVD video, CD, etc...)



Totally Fuji

Secondary Exhibition: Charles Emerson "Fuji"

Press Image Data Request

TO: Tokaido Hiroshige Museum of Art Press Desk

Fax. 054-375-5321 E-mail. info@tokaido-hiroshige.jp

■ Check the box for image data to be requested.

1. ☐ Poster image
2. ☐ Utagawa Hiroshige / *Thirty-six Views of Mount Fuji* "The Pine Forest of Miho in Suruga Province"
3. ☐ Utagawa Hiroshige / *Thirty-six Views of Mount Fuji* "The Sea off Satta in Suruga Province"
4. ☐ Utagawa Hiroshige / *Thirty-six Views of Mount Fuji* "The Seashore in Izu Province"
5. ☐ Utagawa Hiroshige / *Thirty-six Views of Mount Fuji* "Fuji Marsh in Suruga Province"
6. ☐ Charles Emerson / "MT. FUJI – NORTH EAST SOUTH WEST."
7. ☐ Charles Emerson / "MT. FUJI. 06:30 12:20 18:20 23:10"

Your Company:

Publication's Name:

Your Name:

TEL :

FAX :

E-mail :

When do you need the image by (month / date / time) ?

*Can be sent between 10:00 – 16:00 (JST)

Planned publishing date (section title)

〈Usage Conditions〉

- * The images may be used only for editorial press purposes in conjunction with this exhibition and may not be used after the exhibition is over.
- * Images may not be altered (trimmed, combined with other images or text, etc...).
- * Images must be reproduced with notice of attribution.
- * When an image is used, please email us a review copy
- * Please send a final copy for our records (publication copy, URL, DVD video, CD, etc...)

Please send us information if you introduce our program.

Tel 054-375-4454 / Fax 054-375-5321 info@tokaido-hiroshige.jp