



Hiroshige, Toyokuni, Kuniyoshi

- Fifty-three Stations by Two Brushes
and Fifty-three Pairings for the Tōkaidō Road -

Secondary Exhibition: Life Inside the Ukiyo-e

2017 June 13 (Tue.) - August 20 (Sun.)

Part 1 / June 13 (Tue.) - July 17 (Mon.)

Part 2 / July 19 (Wed.) - August 20 (Sun.)

Organizer: Shizuoka City Tokaido Hiroshige Museum of Art

Designated Manager: NPO Hexaproject

Outline

As the “*Edo Sunago Saisenki*”, a written commentary on events and people published in 1853, introduced the three *Eshi* as Toyokuni “*Nikaho* (portrait)”, Kuniyoshi “*Musha* (warrior)”, and Hiroshige “*Meisho* (famous sights)” in the Ukiyo-e *Eshi* ranking, the *Eshi* were very popular in three distinct genres. This exhibition will introduce the Tōkaidō series: “*Fifty-three Stations by Two Brushes*” and “*Fifty-three Pairings for the Tōkaidō Road*”, which are collaborative works by Toyokuni III, Kuniyoshi, and Hiroshige. Although these works are based on the Tōkaidō, they depict legends and historical figures related to the area in addition to post-towns and the surrounding scenery.

Please enjoy works of the Tōkaidō by three incredibly popular *Eshi* that follow the Utagawa-style from the late Edo era.

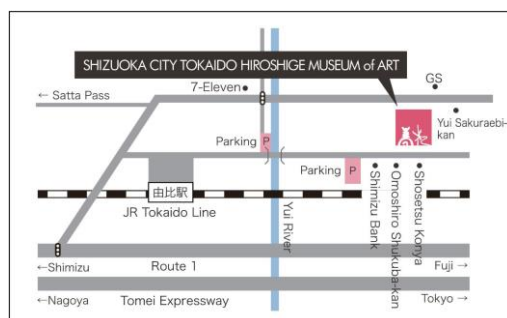
Hours 9:00 AM – 5:00 PM (last admission 30 minutes before closing time)

Closed Mondays (if it falls on a holiday, then the following Tuesday)

Adults: 510 (410) yen / University / High School Students: 300 (240) yen / Junior high students and younger: 120 (100) yen

* () indicates prices for groups of 20 or more * Persons with proof of disability and one accompanying person are admitted free of charge

* Shizuoka City residents, junior high students and younger, as well as Shizuoka City residents over 70 are admitted free of charge.



Access by train:

Take the JR Tokaido Line and get off at Yui Station.
It is a 25-minute walk or 5-minute taxi ride from there.

Access by car:

There are 21 parking spaces at the museum
(Yui Honjin Park Parking)

■From Osaka, Nagoya area

Exit the Tomei Expressway at the Shimizu IC and it is 20-minutes
by Route 1 from there.

■From Tokyo, Yokohama area

Exit the Tomei Expressway at the Fuji IC and it is 25-minutes
by Route 1 from there.

For more information on this exhibition and press inquiries

Tel 054-375-4454 / Fax 054-375-5321 info@tokaido-hiroshige.jp

Shizuoka City Tokaido Hiroshige Museum of Art

297-1 Yui, Shimizu-ku Shizuoka City 421-3103

[URL] www.tokaido-hiroshige.jp [facebook] www.facebook.com/tokaido.hiroshige

Exhibition Highlights

① Tōkaidō which was drawn by the popular painter of the Utagawa-style

Utagawa Hiroshige created over 20 series of the Tōkaidō in his life. Amongst of them, this exhibition includes the unique works, “Fifty-three Stations by Two Brushes” (part 1) a series that was depicted the scenery by Hiroshige and the figures by Toyokuni III, and “Fifty-three Paintings for the Tokaido Road” (part 2) a series that was depicted each post-towns by Hiroshige, Toyokuni III and Kuniyoshi. Please enjoy the amazing works by the three great masters followed the Utagawa-style in Edo era.



Work exhibited in Part 1.
Utagawa Hiroshige, Utagawa Toyokuni III
Fifty-three Stations by Two Brushes “Okabe”
Collection of Shizuoka City Tokaido Hiroshige Museum of Art



Work exhibited in Part 2.
Utagawa Kuniyoshi
Fifty-three Paintings for the Tokaido Road “Kuwana”
Collection of Shizuoka City Tokaido Hiroshige Museum of Art

② Enjoying the Tōkaidō through Stories

There are many stories based on the main road and post-towns of the Tōkaidō. This exhibition introduces viewers a new perspective of the Tōkaidō as they use different subjects from the typical scenery such as legends, Kabuki and Noh songs. We hope you'll find another way to enjoy the exhibition.

Related Event 1: “Revolving ‘Living’ Lanterns”

This is a workshop in which participants will make revolving “lanterns”, a common feature of the summer in the Edo era. Let's make your own unique “revolving lantern” using ‘living’ Ukiyo-e.

- When: August 11 (Fri. / Holiday) 13:30 - 16:00
 - Who: General (Grades 4 and up / Children younger than middle school must be accompanied by an adult)
 - Cost: Free *museum entrance fee is required
 - Registration: Applications accepted by telephone (054-375-4454) or through our website.
- Space are limited to the first 10 people (pre-registration recommended). Registration will close once all spaces are filled.

Related Event 2: Gallery Talks by a Museum Curator

- Date: June 25 (Sun.), July 30 (Sun.) 13:00 - 13:30
 - Cost: Free *museum entrance fee is required
- Language: Japanese Meeting place is the entrance hall of the museum. No pre-registration needed; unlimited enrollment

Artworks

Part 1 *Fifty-three Stations by Two Brushes* 56 pieces (including catalog)

A series combining scenery of the Tōkaidō depicted by Hiroshige with Kabuki programs, historical figures, and entertainment of post-towns depicted by Toyokuni III.



Work exhibited in Part 1.

Utagawa Hiroshige, Utagawa Toyokuni III
Fifty-three Stations by Two Brushes
 “Kuwana”

Collection of Shizuoka City Tokaido Hiroshige
 Museum of Art



Work exhibited in Part 1.

Utagawa Hiroshige, Utagawa Toyokuni III
Fifty-three Stations by Two Brushes
 “Ejiri”

Collection of Shizuoka City Tokaido Hiroshige
 Museum of Art



Work exhibited in Part 1.

Utagawa Hiroshige, Utagawa Toyokuni III
Fifty-three Stations by Two Brushes
 “Akasaka”

Collection of Shizuoka City Tokaido Hiroshige
 Museum of Art

Part 2 *Fifty-three Pairings for the Tōkaidō Road* 55 pieces

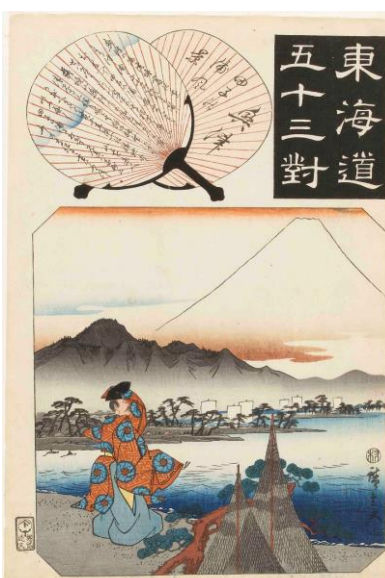
A series of work that revolves around legends of the Tōkaidō and traditional cultures of specific regions by three *Eshi* - Hiroshige, Toyokuni III, and Kuniyoshi.



Work exhibited in Part 2.

Utagawa Kuniyoshi
Fifty-three Paintings for the Tokaido Road
 “Kawasaki”

Collection of Shizuoka City Tokaido Hiroshige
 Museum of Art



Work exhibited in Part 2.

Utagawa Kuniyoshi
Fifty-three Paintings for the Tokaido Road
 “Okitsu”

Collection of Shizuoka City Tokaido Hiroshige
 Museum of Art



Work exhibited in Part 2.

Utagawa Kuniyoshi
Fifty-three Paintings for the Tokaido Road
 “Arai”

Collection of Shizuoka City Tokaido Hiroshige
 Museum of Art

Secondary Exhibition: Life Inside the Ukiyo-e

Many forms of life that appear in Ukiyo-e will be featured in this portion including animals that actively supported the daily lives of people, life that appear with the seasons, legendary creatures, and even *Yōkai* (imaginary creatures). This exhibition will also introduce examples where they are sneaked in areas that are difficult to find. Please find them within their work.



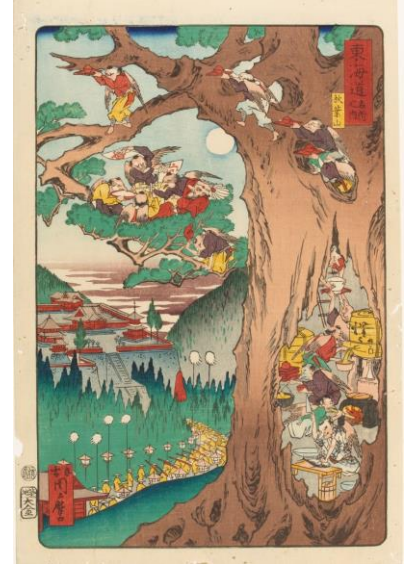
Work exhibited in Part 1.

Utagawa Hiroshige
Cats and Mice, Peeping
Collection of Shizuoka City Tokaido Hiroshige
Museum of Art



Work exhibited in Part 2.

Ikkaisai Yoshitoshi
*Scenes of Famous Places along the Tōkaidō
Road "Yuigahama"*
Collection of Shizuoka City Tokaido Hiroshige
Museum of Art



Work exhibited in Part 1.

Seisei Chikamaro
*Scenes of Famous Places along the Tōkaidō
Road "Mt. Akiha"*
Collection of Shizuoka City Tokaido Hiroshige
Museum of Art

About of Museum

Shizuoka City Tokaido Hiroshige Museum of Art

Shizuoka City Tokaido Hiroshige Museum of Art is the first art museum in Japan to focus on the works of Edo Ukiyo-e Artist, Utagawa Hiroshige. There are approximately 1400 landscape woodblock prints and other works within the Hiroshige collection, including Hiroshige's masterpieces *Fifty-Three Stations of the Tōkaidō* (Tōkaidō Hoeidō Edition) and *One Hundred Famous Views of Edo*. We aim to promote a new culture of Ukiyo-e through curated exhibitions connecting Ukiyo-e with contemporary works. Visitors can enjoy the magnificence of internationally loved Ukiyo-e works from Edo to the present.

About Hiroshige

Utagawa Hiroshige (1797 - 1858) Ukiyo-e artist

He became a pupil of Toyohiro Utagawa when he was about 15 years old. His work *Fifty Three Station of the Tōkaidō* (Tōkaidō Hoeidō Edition) caused a great sensation, after that he continued to create Ukiyo-e prints about the Tōkaidō and the landscape of Edo and became famous as landscape artist. While he was working on what is considered his late-life masterpiece, *One Hundred Famous Views of Edo*, Hiroshige fell ill and passed away at the age of 62. Hiroshige's bold composition and lyrical style is loved by all and his works continue to influence artists all over the world.

Utagawa Toyokuni III *Memorial Portrait of Utagawa Hiroshige*
Collection of Shizuoka City Tokaido Hiroshige Museum of Art





Press Images

High-resolution data for the following 5 images are available for editorial coverage of exhibitions. Please send your request by email or fax after reading the usage conditions on the following page.



1



2



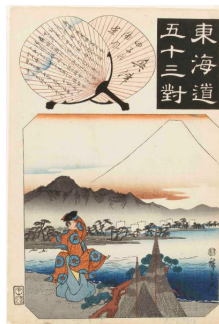
3



4



5



6



7



8

□Titles and Credits

- | | |
|--|---|
| 1. Poster image | ©Shizuoka City Tokaido Hiroshige Museum of Art |
| 2. Utagawa Hiroshige, Utagawa Toyokuni III | <i>Fifty-three Stations by Two Brushes "Kuwana"</i> Collection of Shizuoka City Tokaido Hiroshige Museum of Art |
| 3. Utagawa Hiroshige, Utagawa Toyokuni III | <i>Fifty-three Stations by Two Brushes "Ejiri"</i> Collection of Shizuoka City Tokaido Hiroshige Museum of Art |
| 4. Utagawa Hiroshige, Utagawa Toyokuni III | <i>Fifty-three Stations by Two Brushes "Akasaka"</i> Collection of Shizuoka City Tokaido Hiroshige Museum of Art |
| 5. Utagawa Kuniyoshi | <i>Fifty-three Paintings for the Tokaido Road "Kawasaki"</i> Collection of Shizuoka City Tokaido Hiroshige Museum of Art |
| 6. Utagawa Hiroshige | <i>Fifty-three Paintings for the Tokaido Road "Okitsu"</i> Collection of Shizuoka City Tokaido Hiroshige Museum of Art |
| 7. Utagawa Toyokuni III | <i>Fifty-three Paintings for the Tokaido Road "Arai"</i> Collection of Shizuoka City Tokaido Hiroshige Museum of Art |
| 8. Ikkaisai Yoshitoshi | <i>Scenes of Famous Places along the Tokaido Road "Yuigahama"</i> Collection of Shizuoka City Tokaido Hiroshige Museum of Art |

〈Usage Conditions〉

- * The images may be used only for editorial press purposes in conjunction with this exhibition and may not be used after the exhibition is over.
- * Images may not be altered (trimmed, combined with other images or text, etc...).
- * Images must be reproduced with notice of attribution.
- * When an image is used, please email us a review copy
- * Please send a final copy for our records (publication copy, URL, DVD video, CD, etc...)



Hiroshige, Toyokuni, Kuniyoshi

- Fifty-three Stations by Two Brushes and Fifty-three Pairings for the Tōkaidō Road –
Secondary Exhibition: Life Inside the Ukiyo-e

Press Image Data Request

TO: Tokaido Hiroshige Museum of Art Press Desk

Fax. 054-375-5321 E-mail. info@tokaido-hiroshige.jp

■ Check the box for image data to be requested.

1. ☐ Poster image
2. ☐ Utagawa Hiroshige, Utagawa Toyokuni III / *Fifty-three Stations by Two Brushes* "Kuwana"
3. ☐ Utagawa Hiroshige, Utagawa Toyokuni III / *Fifty-three Stations by Two Brushes* "Ejiri"
4. ☐ Utagawa Hiroshige, Utagawa Toyokuni III / *Fifty-three Stations by Two Brushes* "Akasaka"
5. ☐ Utagawa Kuniyoshi / *Fifty-three Paintings for the Tokaido Road* "Kawasaki"
6. ☐ Utagawa Hiroshige / *Fifty-three Paintings for the Tokaido Road* "Okitsu"
7. ☐ Utagawa Toyokuni III / *Fifty-three Paintings for the Tokaido Road* "Arai"
8. ☐ Ikkaisai Yoshitoshi / *Scenes of Famous Places along the Tōkaidō Road* "Yuigahama"

Your Company:

Publication's Name:

Your Name:

TEL :

FAX :

E-mail :

When do you need the image by (month / date / time) ?

*Can be sent between 10:00 – 16:00 (JST)

Planned publishing date (section title)

〈Usage Conditions〉

- * The images may be used only for editorial press purposes in conjunction with this exhibition and may not be used after the exhibition is over.
- * Images may not be altered (trimmed, combined with other images or text, etc...).
- * Images must be reproduced with notice of attribution.
- * When an image is used, please email us a review copy
- * Please send a final copy for our records (publication copy, URL, DVD video, CD, etc...)

Please send us information if you introduce our program.

Tel 054-375-4454 / Fax 054-375-5321 info@tokaido-hiroshige.jp