

The Three Hiroshige

2017 January 31 (Tue.) - April 2 (Sun.)

Part 1 / January 31 (Tue.) - March 5 (Sun.)

Part 2 / March 7 (Tue.) - April 2 (Sun.)

Organizer: Shizuoka City Tokaido Hiroshige Museum of Art

Designated Manager: NPO Hexaproject

Outline

After the first generation Utagawa Hiroshige, who became popular as a scenery *Eshi*, the Hiroshige name was succeeded for five generations. Within the five generations of the Hiroshige, the ones that depicted the most scenery paintings as an Ukiyo-e painter were the first three. The three Hiroshige depicted the liveliness of rapidly changing Japan from the end of the Edo era to the mid-Meiji era.

This exhibition will focus on the scenery prints depicted by the first, second, and third generation Hiroshige and will attempt at comparing the work of each. Please also enjoy scenery Ukiyo-e prints by *Eshi* other than the three Hiroshige.

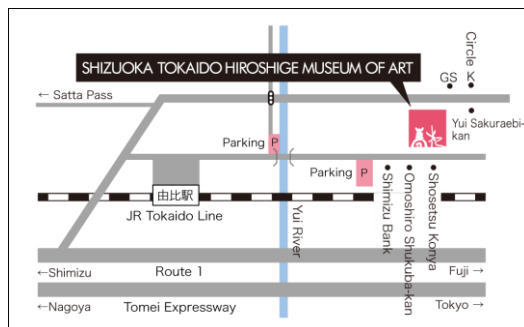
Hours 9:00 AM – 5:00 PM (last admission 30 minutes before closing time)

Closed Mondays (if it falls on a holiday, then the following Tuesday)

Adults: 510 (410) yen / University / High School Students: 300 (240) yen / Junior high students and younger: 120 (100) yen

* () indicates prices for groups of 20 or more * Persons with proof of disability and one accompanying person are admitted free of charge

* Shizuoka City residents, junior high students and younger, as well as Shizuoka City residents over 70 are admitted free of charge.



Access by train:

Take the JR Tokaido Line and get off at Yui Station.
It is a 25-minute walk or 5-minute taxi ride from there.

Access by car:

There are 21 parking spaces at the museum
(Yui Honjin Park Parking)

■From Osaka, Nagoya area

Exit the Tomei Expressway at the Shimizu IC and it is 20-minutes by Route 1 from there.

■From Tokyo, Yokohama area

Exit the Tomei Expressway at the Fuji IC and it is 25-minutes by Route 1 from there.

For more information on this exhibition and press inquiries

Tel 054-375-4454 / Fax 054-375-5321 info@tokaido-hiroshige.jp

Shizuoka City Tokaido Hiroshige Museum of Art

297-1 Yui, Shimizu-ku Shizuoka City 421-3103

[URL] www.tokaido-hiroshige.jp [facebook] www.facebook.com/tokaido.hiroshige

Exhibition Highlights

First Generation Hiroshige and the Two Hiroshiges

Shigenobu and Shigemasa, who studied under Hiroshige I, succeeded the Hiroshige name and became successful Ukiyo-e painters. This exhibition will exhibit the works of the two Hiroshiges, which depicted the same subject as their master, Hiroshige I, to compare their differences in style. We hope you notice the expressions inherited from their master, as well as their unique individual styles.



Work exhibited in Part 2. Utagawa Hiroshige I
Famous Places of Our Country "Mount Fuji from Satta Pass"
Collection of Shizuoka City Tokaido Hiroshige Museum of Art



Work exhibited in Part 2. Utagawa Hiroshige III (Shigemasa)
Revised Edition of Itinerary on the Tokaido "Yui: Foot of Satta Pass"
Collection of Mt. Fuji and Princess Kaguya Museum

There Will Also Be Exhibitions of Rare Works by the First Generation Hiroshige! "Hanshita-e (Master Drawing)"

Hanshita-e are the final drafts in making the woodblock of Ukiyo-e. They are pasted directly on the woodblock and are carved along the lines. Regularly, *Hanshita-e* will disappear in the process of creating Ukiyo-e but a few survived as they were not passed on to the carving process. This exhibition will introduce *Hanshita-e* with famous places as the theme.

Work exhibited in Part 1. Utagawa Hiroshige I
Hanshita-e (Master Drawing)
Collection of Shizuoka City Tokaido Hiroshige Museum of Art



"Nakatsugawa on a Rainy Day"

In the *Sixty-nine Stations of the Kisokaido Road* series by Hiroshige I and Keisan Eisen, there is an extremely rare piece called the *Sixty-nine Stations of the Kisokaido Road "Nakatsugawa"* (also known as *Nakatsugawa on a Rainy Day*). In addition to "Nakatsugawa on a Rainy Day", there is also "Nakatsugawa on a Sunny Day". It is said that the woodblock for "Nakatsugawa on a Rainy Day" disappeared, and the variant edition, "Nakatsugawa on a Sunny Day" was created as a replacement.

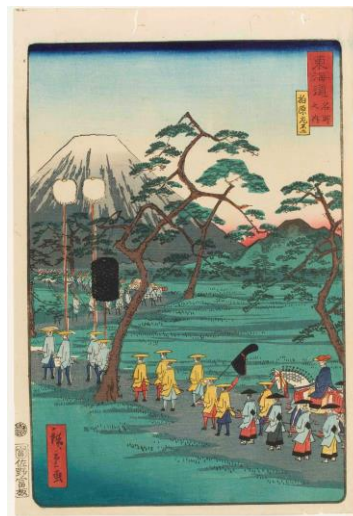


Work exhibited in Part 2. Utagawa Hiroshige I
Sixty-nine Stations of the Kisokaido Road "Nakatsugawa"
Collection of Shizuoka City Tokaido Hiroshige Museum of Art

Artworks

Scenery Prints and the Times Depicted by the Three Hiroshiges

Scenery of landscapes do not change radically over a short period of time. This is why Ukiyo-e scenery prints continued to sell over years and decades due to popular demand. However, the heart of the city in Japan changed radically during the end of Edo period and Meiji era with Perry's expedition arriving in Japan, damages by the large earthquake in Ansei, and the rapid modernization after the opening of ports. The *Eshi* that were successful in capturing the times were the first to third generation Hiroshiges. This exhibition will focus on the scenery prints by the three Hiroshiges, and introduce the modernization of Japan depicted in the prints.



Work exhibited in Part 1. **Utagawa Hiroshige II**
Scenes of Famous Places along the Tōkaidō Road "Mount Fuji on the Left at Kashiwabara"
Collection of Shizuoka City Tokaido Hiroshige Museum of Art



Work exhibited in Part 1. **Utagawa Hiroshige III**
Revised Edition of Itinerary on the Tōkaidō "Yoshiwara: Mount Fuji on the Left"
Collection of Mt. Fuji and Princess Kaguya Museum

The Many Forms of Hiroshige

This exhibition will be *Kachō-ga* (painting of flowers and birds) by Hiroshige I, *Yokohama-e* and *Chabako-e* by Hiroshige II, and the *Kaika-e* (modernization pictures) by Hiroshige III. The exhibition will look at work other than their iconic scenery prints.

Left image: work exhibited in Part 1.
Utagawa Hiroshige I
Grand Series of Fishes "Ayu"
Collection of Shizuoka City Tokaido Hiroshige Museum of Art



Right image: work exhibited in Part 2.
Risshō (Utagawa Hiroshige II)
Chabako-e (Tea Box Design)
Collection of Fujieda Municipal Museum of History



Related Event / Gallery Talks by a Museum Curator

☐ Date: February 12 (Sun.), March 19 (Sun.)

13:00 - 13:30

☐ Cost: Free *museum entrance fee is required

Language: Japanese

Meeting place is the entrance hall of the museum. No pre-registration needed; unlimited enrollment

About of Museum

Shizuoka City Tokaido Hiroshige Museum of Art

Shizuoka City Tokaido Hiroshige Museum of Art is the first art museum in Japan to focus on the works of Edo Ukiyo-e Artist, Utagawa Hiroshige. There are approximately 1400 landscape woodblock prints and other works within the Hiroshige collection, including Hiroshige's masterpieces *Fifty-Three Stations of the Tōkaidō* (Tōkaidō Hoeidō Edition) and *One Hundred Famous Views of Edo*. We aim to promote a new culture of Ukiyo-e through curated exhibitions connecting Ukiyo-e with contemporary works. Visitors can enjoy the magnificence of internationally loved Ukiyo-e works from Edo to the present.

About Hiroshige

Utagawa Hiroshige (1797 - 1858) Ukiyo-e artist

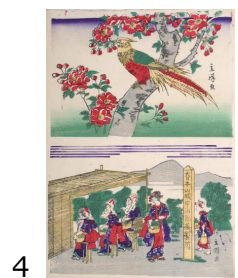
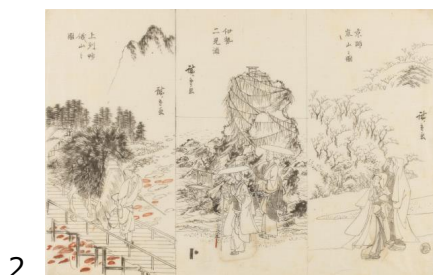
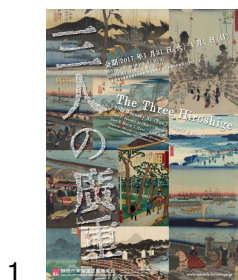
He became a pupil of Toyohiro Utagawa when he was about 15 years old. His work *Fifty Three Station of the Tōkaidō* (Tōkaidō Hoeidō Edition) caused a great sensation, after that he continued to create Ukiyo-e prints about the Tōkaidō and the landscape of Edo and became famous as landscape artist. While he was working on what is considered his late-life masterpiece, *One Hundred Famous Views of Edo*, Hiroshige fell ill and passed away at the age of 62. Hiroshige's bold composition and lyrical style is loved by all and his works continue to influence artists all over the world.

Work exhibited in Part 2. Utagawa Toyokuni Ⅲ
Memorial Portrait of Utagawa Hiroshige Ⅰ
Collection of Shizuoka City Tokaido Hiroshige Museum of Art



Press Images

High-resolution data for the following 6 images are available for editorial coverage of exhibitions. Please send your request by email or fax after reading the usage conditions on the following page.



□ Titles and Credits

- | | | |
|----|---------------------------------|--|
| 1. | Poster image | ©Shizuoka City Tokaido Hiroshige Museum of Art |
| 2. | Utagawa Hiroshige Ⅰ | <i>Hanshita-e</i> (Master Drawing), Collection of Shizuoka City Tokaido Hiroshige Museum of Art. |
| 3. | Utagawa Hiroshige Ⅰ | <i>Sixty-nine Stations of the Kisokaidō Road "Nakatsugawa"</i> , Collection of Shizuoka City Tokaido Hiroshige Museum of Art |
| 4. | Risshō
(Utagawa Hiroshige Ⅱ) | <i>Chabako-e</i> (Tea Box Design), Collection of Fujieda Municipal Museum of History |
| 5. | Utagawa Hiroshige Ⅲ | <i>Revised Edition of Itinerary on the Tōkaidō "Yui: Foot of Satta Pass"</i> , Collection of Mt. Fuji and Princess Kaguya Museum |
| 6. | Utagawa Toyokuni Ⅲ | Memorial Portrait of Utagawa Hiroshige, Collection of Shizuoka City Tokaido Hiroshige Museum of Art |

〈Usage Conditions〉

- * The images may be used only for editorial press purposes in conjunction with this exhibition and may not be used after the exhibition is over.
- * Images may not be altered (trimmed, combined with other images or text, etc...).
- * Images must be reproduced with notice of attribution.
- * When an image is used, please email us a review copy
- * Please send a final copy for our records (publication copy, URL, DVD video, CD, etc...)



The Three Hiroshige

Press Image Data Request

TO: Tokaido Hiroshige Museum of Art Press Desk

Fax. 054-375-5321 E-mail. info@tokaido-hiroshige.jp

■ Check the box for image data to be requested.

1. ☐ Poster image
2. ☐ Utagawa Hiroshige I / *Hanshita-e* (Master Drawing)
3. ☐ Utagawa Hiroshige I / *Sixty-nine Stations of the Kisokaidō Road "Nakatsugawa"*
4. ☐ Utagawa Hiroshige II / *Chabako-e* (Tea Box Design)
5. ☐ Utagawa Hiroshige III / *Revised Edition of Itinerary on the Tōkaidō "Yui: Foot of Satta Pass"*
6. ☐ Utagawa Toyokuni III / Memorial Portrait of Utagawa Hiroshige

Your Company:

Publication's Name:

Your Name:

TEL :

FAX :

E-mail :

When do you need the image by (month / date / time) ?

*Can be sent between 10:00 – 16:00 (JST)

Planned publishing date (section title)

〈Usage Conditions〉

- * The images may be used only for editorial press purposes in conjunction with this exhibition and may not be used after the exhibition is over.
- * Images may not be altered (trimmed, combined with other images or text, etc...).
- * Images must be reproduced with notice of attribution.
- * When an image is used, please email us a review copy
- * Please send a final copy for our records (publication copy, URL, DVD video, CD, etc...)

Please send us information if you introduce our program.

Tel 054-375-4454 / Fax 054-375-5321 info@tokaido-hiroshige.jp