



Two Main Roads

~Tōkaidō and Nakasendō~

August 25 (Tue.) ~ November 1 (Sun.) 2020

Part 1 August 25 (Tue.) ~ September 27 (Sun.)

Part 2 September 29 (Tue.) ~ November 1 (Sun.)

Organizer: Shizuoka City Tokaido Hiroshige Museum of Art
Designated Manager: NPO Hexaproject

Outline

Kaidō-e (scenic pictures of roads) became a genre of Ukiyo-e with the increase in travelers due to the maintenance of roads, and the rising interest towards travel among the people. This exhibition will feature the two main roads connecting Edo and Kyoto: the “Tōkaidō” that passes through the coastline and the “Nakasendō” that passes through the mountains along the middle of Japan. These two main roads will be introduced in the form of a Ukiyo-e Hanga series.

HOURS

Hours : 9:00 ~ 17:00
(Last admission; 30mins. Before closing time)
Closed : Mondays
(If it falls on a holiday, then the following Weekday)

FEE

Adults : 520 (410) yen
University / High School Students : 310 (250) yen
Junior high students and younger : 130 (100) yen

* () indicates prices for groups of 20 or more
* Persons with proof of disability and one accompanying person are admitted free of charge.
* Shizuoka City residents, junior high students and younger, as well as Shizuoka City residents over 70 are admitted free of charge.

ACCESS

Access by train

Take the JR Tokaido Line and get off at Yui Station. It is a 25-minute walk or 5-minute taxi ride from there.

Access by car

There are 21 parking spaces at the museum (Yui Honjin Park Parking)



静岡市東海道広重美術館
SHIZUOKA CITY TOKAIDO HIROSHIGE MUSEUM of ART



Two Main Roads ~Tōkaidō and Nakasendō~



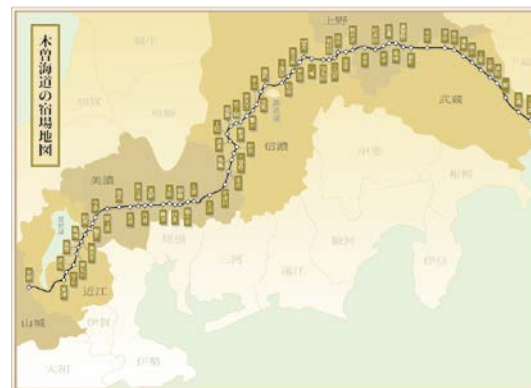
Part 1

August 25 (Tue.) ~ September 27 (Sun.)

Sixty-nine Stations of the Kisokaidō

Total 71 Pieces

Part 1 will include the rare piece, *"Nakatsugawa on a Rainy Day"* and *"Sixty-nine Stations of the Kisokaidō"* which is a 70-piece series that spans from the Nihombashi to Ōtsu station; the series begins with the works of Keisai Eisen, master of the Bijinga, and later succeeded by Hiroshige.



Utagawa Hiroshige
Sixty-nine Stations of the Kisokaidō "Ōi"
Collection of Museum



Utagawa Hiroshige
Sixty-nine Stations of the Kisokaidō "Nakatsugawa on a Rainy Day"
Collection of Museum



Utagawa Hiroshige
Sixty-nine Stations of the Kisokaidō "Seba"
Collection of Museum

Part 2

September 29 (Tue.) ~ November 1 (Sun.)

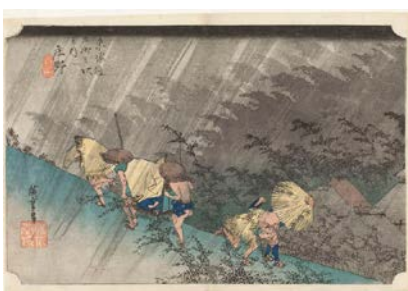
Fifty-Three Stations of the Tōkaidō

Total 55 Pieces

Part 2 will feature Hiroshige's masterpiece, *"Fifty-Three Stations of the Tōkaidō"* that is a 55 piece that starts from Nihombashi to Kyoto.



Utagawa Hiroshige
Fifty-Three Stations of the Tōkaidō "Kambara: Night Snow"
Collection of Museum



Utagawa Hiroshige
Fifty-Three Stations of the Tōkaidō "Shōno: Driving Rain"
Collection of Museum



Utagawa Hiroshige
Fifty-Three Stations of the Tōkaidō "Numazu: Twilight"
Collection of Museum

Part 2 September 29 (Tue.) ~ November 1 (Sun.)

Utagawa Hiroshige
Cutout Pictures of the Tōkaidō Road
"No. 4: Hara, Yoshiwara, Kanbara, Yui, Okitsu"
Museum Collection

Exhibition Room

The small exhibition room will exhibit a total of 12 pieces from "Cutout Pictures of the Tōkaidō", which is arranged so that there are many pictures related to post-towns separated by frames of various sizes in one Hanga.

*Changes may be made to the exhibit content and displayed works.

Related Event

EVENT Gallery Talks by a Museum Curator

- ☐ **DATE** : September 13(Sun.), October 11(Sun.) 13:00 ~ 13:30
- ☐ **ADMISSION** : Free *museum entrance fee is required.
- ☐ **LANGUAGE** : Japanese

Meeting place is the entrance hall of the museum. No pre-registration needed; unlimited enrollment

Press Images

High-resolution data for the following 6 images are available for editorial coverage of exhibitions.
Please send your request by email or fax after reading the usage conditions on the following page.



1



2



3



4



5



6

■ Title and Credits

- | | |
|----------------------|---|
| 1. Poster Image | ©Shizuoka City Tokaido Hiroshige Museum of Art |
| 2. Utagawa Hiroshige | <i>Fifty-three Stations of the Tōkaidō</i> "Numazu: Twilight"
Collection of Shizuoka City Tokaido Hiroshige Museum of Art |
| 3. Utagawa Hiroshige | <i>Fifty-three Stations of the Tōkaidō</i> "Kambara: Night Snow"
Collection of Shizuoka City Tokaido Hiroshige Museum of Art |
| 4. Utagawa Hiroshige | <i>Fifty-three Stations of the Tōkaidō</i> "Shōno: Driving Rain"
Collection of Shizuoka City Tokaido Hiroshige Museum of Art |
| 5. Utagawa Hiroshige | <i>Sixty-nine Stations of the Kisokaidō</i> "Seba"
Collection of Shizuoka City Tokaido Hiroshige Museum of Art |
| 6. Utagawa Hiroshige | <i>Sixty-nine Stations of the Kisokaidō</i> "Nakatsugawa on a Rainy Day"
Collection of Shizuoka City Tokaido Hiroshige Museum of Art |

Two Main Roads

~Tōkaidō and Nakasendō~

Press Image Date Request

TO: Tokaido Hiroshige Museum of Art Press Desk

FAX : 054-375-5321

E-mail: info@tokaido-hiroshige.jp

■ Check the box for image data to be requested.

1. Poster Image ©Shizuoka City Tokaido Hiroshige Museum of Art
2. Utagawa Hiroshige *Fifty-three Stations of the Tōkaidō* "Numazu: Twilight"
Collection of Shizuoka City Tokaido Hiroshige Museum of Art
3. Utagawa Hiroshige *Fifty-three Stations of the Tōkaidō* "Kambara: Night Snow"
Collection of Shizuoka City Tokaido Hiroshige Museum of Art
4. Utagawa Hiroshige *Fifty-three Stations of the Tōkaidō* "Shōno: Driving Rain"
Collection of Shizuoka City Tokaido Hiroshige Museum of Art
5. Utagawa Hiroshige *Sixty-nine Stations of the Kisokaidō* "Seba"
Collection of Shizuoka City Tokaido Hiroshige Museum of Art
6. Utagawa Hiroshige *Sixty-nine Stations of the Kisokaidō* "Nakatsugawa on a Rainy Day"
Collection of Shizuoka City Tokaido Hiroshige Museum of Art

Company :

Publication' s Name :

Your Name :

Phone :

FAX :

E-mail :

Desirable time to receive Image (month / date / time) * Office hours: 10:00 ~ 16:00 (JST)

Planned publishing date (sectiontitle)

【 Notes 】

*The images may be used only for editorial press purposes in conjunction with this exhibition and may not be used after the exhibition is over.

*Images may not be altered (trimmed, combined with other images or text, etc...).

*Images must be reproduced with notice of attribution.

*When an image is used, please email us a review copy.

*Please send a finalcopy for our records (publicationcopy, URL, DVDvideo, CD, etc...).